



BIPAC-7560G

Powerline/11g ADSL VPN Firewall Router

Quick Start Guide



For more detailed instructions on configuring and using the Powerline/11g ADSL VPN Firewall Router, please refer to the on-line manual.

Package Contents

- BIPAC-7560G Powerline/11g ADSL VPN Firewall Router
- CD-ROM containing the online manual
- RJ-11 ADSL/telephone Cable
- Ethernet (CAT-5 LAN) Cable
- Console (PS2-RS232) Cable
- Power Adapter
- This Quick Start Guide



Warning

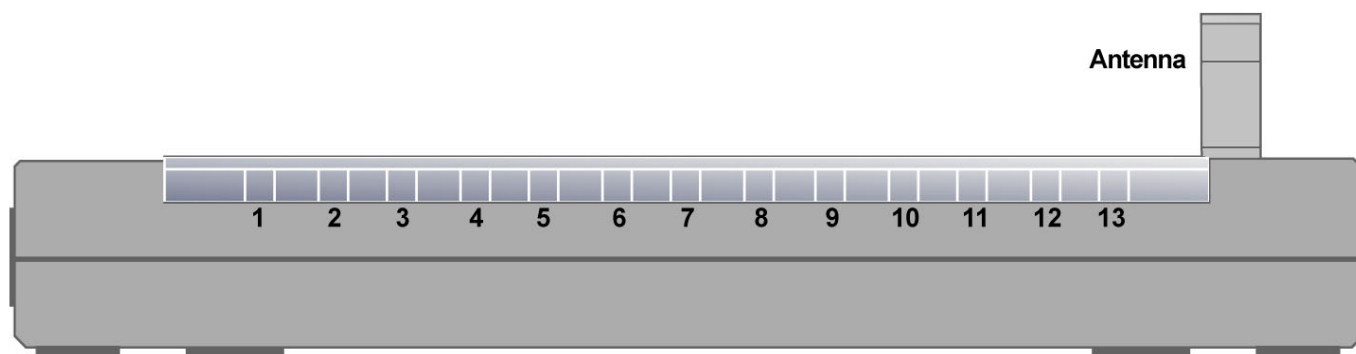
- ✓ Do not use the BIPAC-7560G ADSL VPN Firewall Router in high humidity or high temperatures.
- ✓ Do not use the same power source for the BIPAC-7560G ADSL VPN Firewall Router as other equipment.
- ✓ Do not open or repair the case yourself. If the BIPAC-7560G ADSL VPN Firewall Router is too hot, turn off the power immediately and have it repaired at a qualified service center.
- ✓ Avoid using this product and all accessories outdoors.



Attention

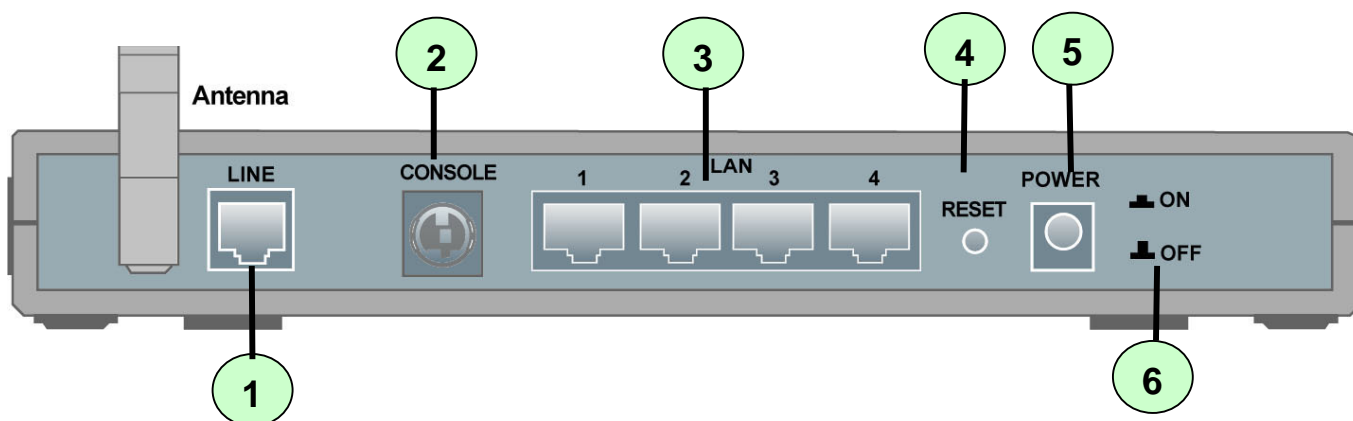
- ✓ Place the BIPAC-7560G ADSL VPN Firewall Router on a stable surface.
- ✓ Only use the power adapter that comes with the package. Using a different voltage rating power adaptor may damage the router.

The Front LEDs



LED		Meaning
1	PWR	Lit when power is ON.
2	SYS	Lit when the system is ready.
3	LAN port 1	Lit when connected to an Ethernet device. Green for 100Mbps; Orange for 10Mbps Blinking when data is transmitted/received.
4	LAN port 2	Lit when connected to an Ethernet device. Green for 100Mbps; Orange for 10Mbps Blinking when data is transmitted/received.
5	LAN port 3	Lit when connected to an Ethernet device. Green for 100Mbps; Orange for 10Mbps Blinking when data is transmitted/received.
6	LAN port 4	Lit when connected to an Ethernet device. Green for 100Mbps; Orange for 10Mbps Blinking when data is transmitted/received.
7	WLAN	Lit green when the wireless connection is established. Flashes when sending/receiving data.
8	Powerline	Lit when HomePlug interface ready. Blinking when data is transmitted/received.
10	MAIL	Flash when there is Email in your configured Email account.
11	PPP	Lit when there is a PPPoA / PPPoE connection.
13	ADSL	Lit when successfully connected to an ADSL DSLAM ("linesync").

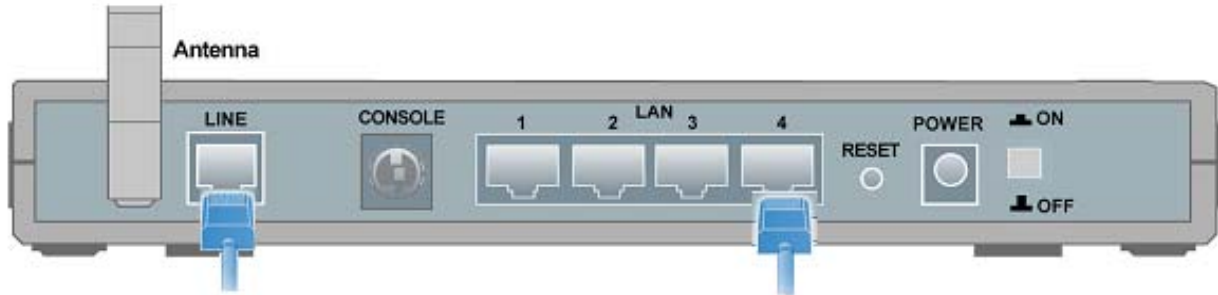
The Rear Ports



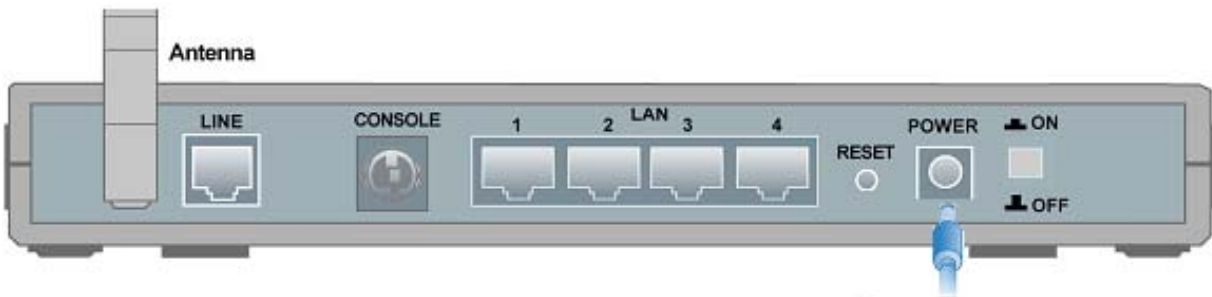
Port		Meaning
1	LINE	Connect the supplied RJ-11 ("telephone") cable to this port when connecting to the ADSL/telephone network.
2	CONSOLE	Connect a PS2/RS-232 cable to this port when connecting to a PC's RS-232 port (9-pin serial port).
3	LAN 1X — 4X (RJ-45 connector)	Connect a UTP Ethernet cable (Cat-5 or Cat-5e) to one of the four LAN ports when connecting to a PC or an office/home network of 10Mbps or 100Mbps.
4	RESET	After the device is powered on, press it to reset the device or restore to factory default settings. 0-3 seconds: reset the device 6 seconds above: restore to factory default settings (this is used when you cannot login to the router. E.g. forgot the password)
5	PWR	Connect the supplied power adapter to this jack.
6	Power Switch	Power ON/OFF switch

Connecting Your ADSL Router

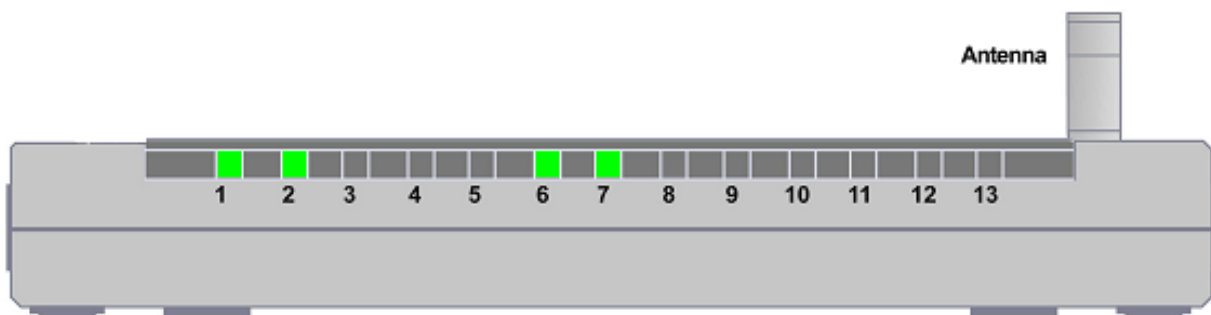
1. Connect the Router to a **LAN** (Local Area Network) and the ADSL/telephone (**LINE**) network.



2. Power on the device.

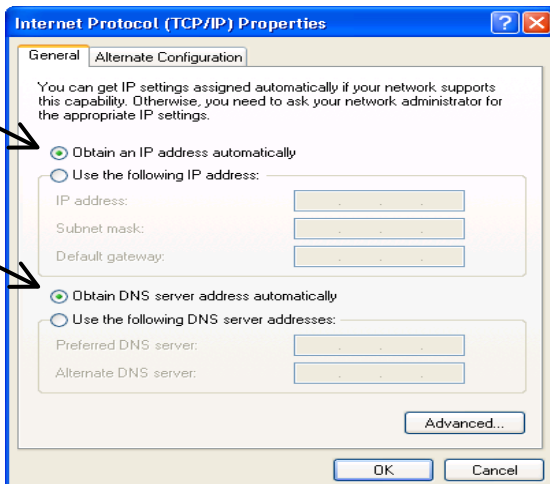
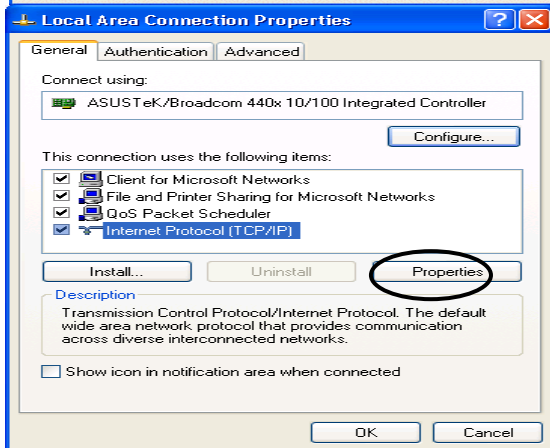
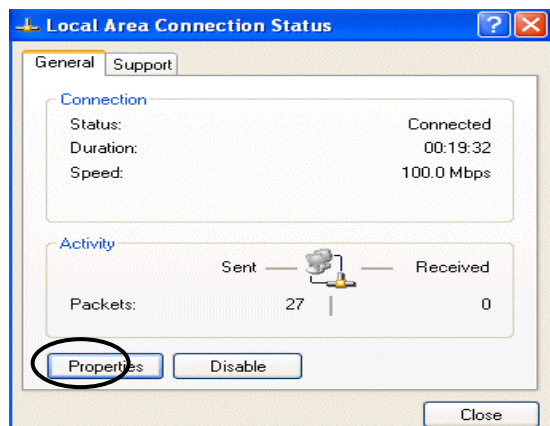
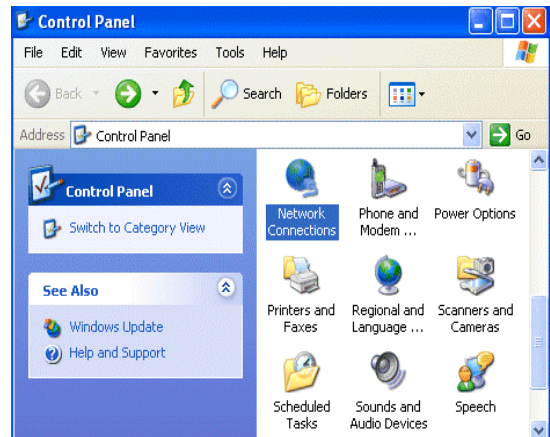


3. Make sure the **PWR**, **SYS**, **WLAN** LEDs are lit steadily and that the **relevant LAN** LED is lit.



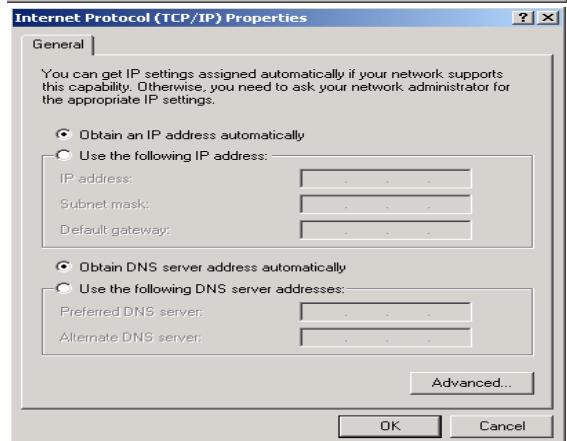
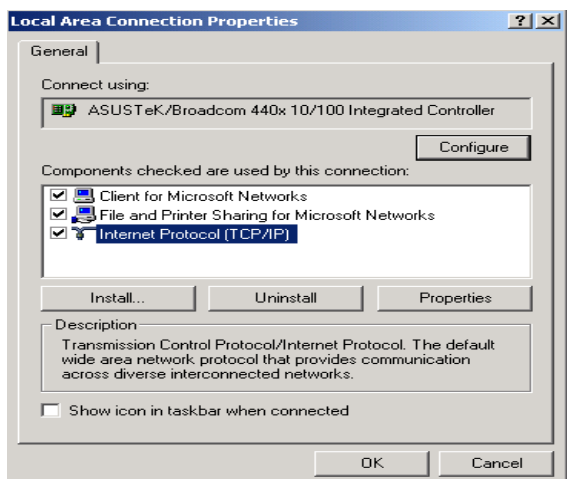
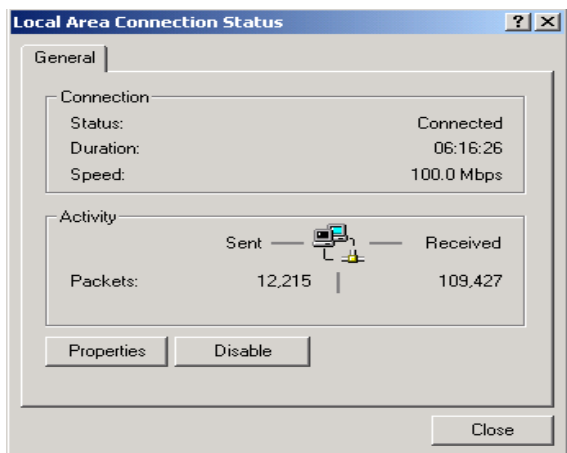
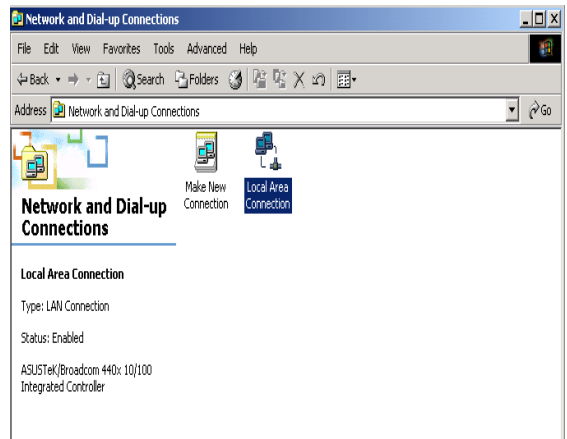
Configuring PC in Windows XP

1. Go to **Start / Control Panel (in Classic View)**. In the Control Panel, double-click on **Network Connections**.
2. Double-click **Local Area Connection**.
3. In the **Local Area Connection Status** window, click **Properties**.
4. Select **Internet Protocol (TCP/IP)** and click **Properties**.
5. Select the **Obtain an IP address automatically** and the **Obtain DNS server address automatically** radio buttons.
6. Click **OK** to finish the configuration.



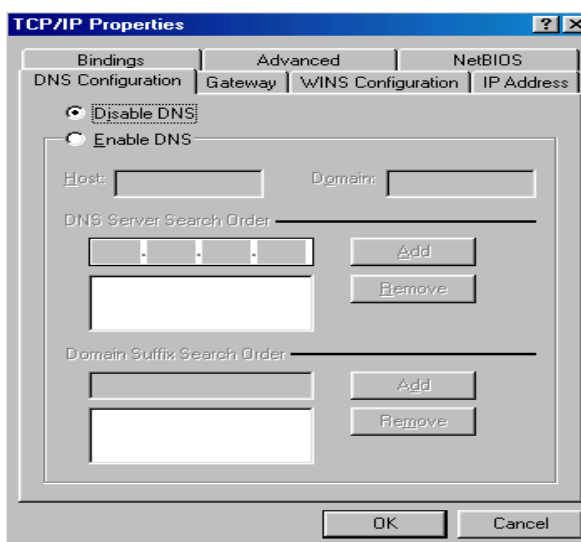
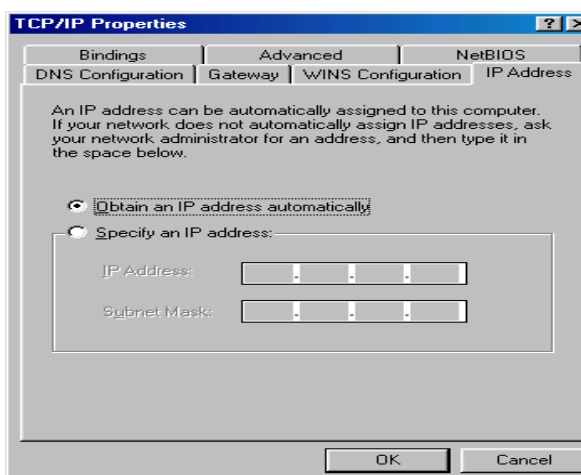
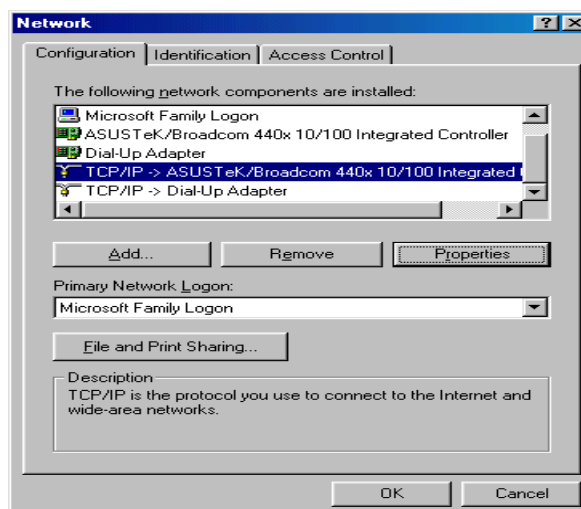
Configuring PC in Windows 2000

1. Go to **Start / Settings / Control Panel**. In the Control Panel, double-click on **Network and Dial-up Connections**.
2. Double-click **Local Area Connection**.
3. In the **Local Area Connection Status** window click **Properties**.
4. Select **Internet Protocol (TCP/IP)** and click **Properties**.
5. Select the **Obtain an IP address automatically** and the **Obtain DNS server address automatically** radio buttons.
6. Click **OK** to finish the configuration.



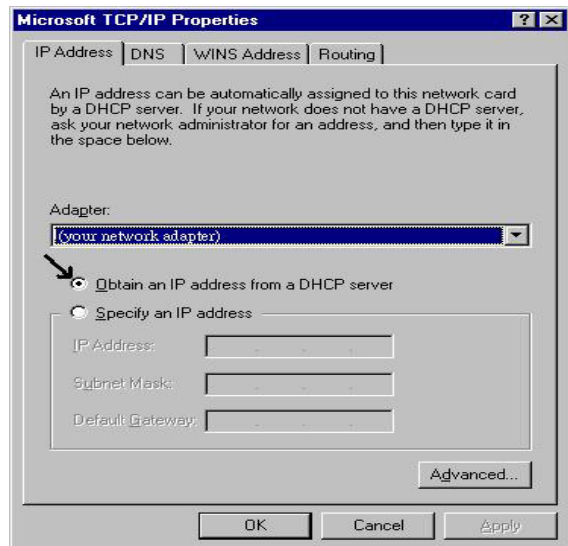
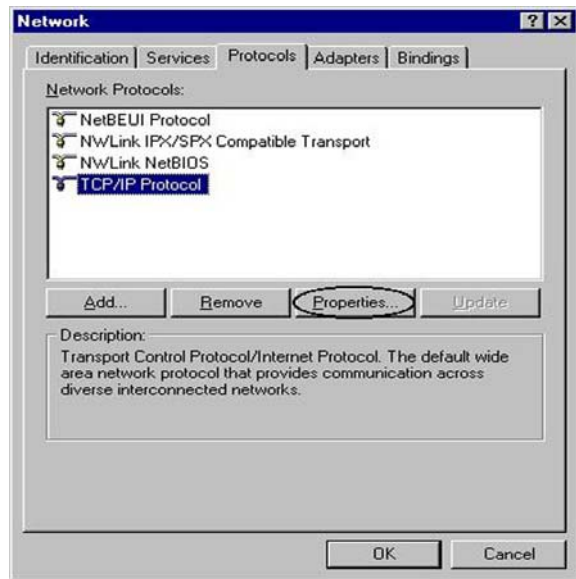
Configuring PC in Windows 98/Me

1. Go to **Start / Settings / Control Panel**. In the Control Panel, double-click on **Network** and choose the **Configuration** tab.
2. Select **TCP/IP -> NE2000 Compatible**, or the name of your Network Interface Card (NIC) in your PC.
3. Select the **Obtain an IP address automatically** radio button.
4. Then select the **DNS Configuration** tab.
5. Select the **Disable DNS** radio button and click **OK** to finish the configuration.



Configuring PC in Windows NT4.0

1. Go to **Start / Settings / Control Panel**. In the Control Panel, double-click on **Network** and choose the **Protocols** tab.
2. Select **TCP/IP Protocol** and click **Properties**.
3. Select the **Obtain an IP address from a DHCP server** radio button and click **OK**.



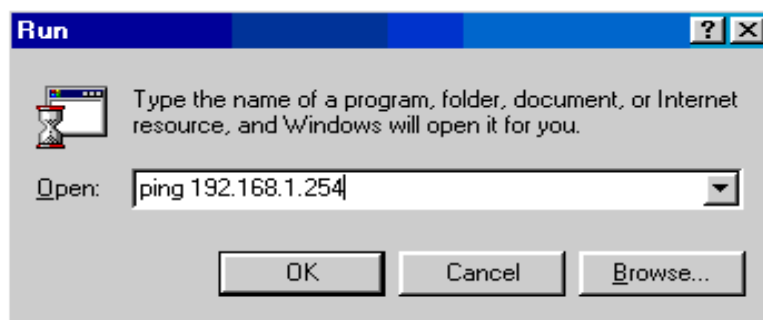
Configuring Your ADSL VPN Firewall Router



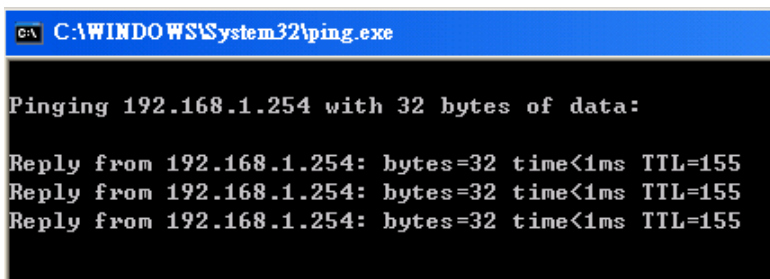
To configure this device, you must have IE 5.0 / Netscape 4.5 or above installed

■ Verifying Your Local Network Connection with the Device

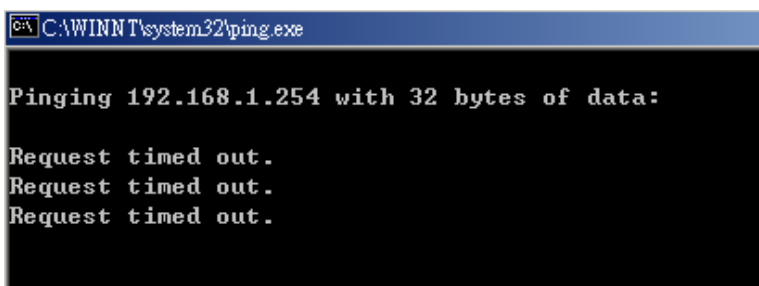
To see if this ADSL Router is visible on the local network, go to **Start / Run**. In the Run dialog box, type “**ping 192.168.1.254**” then press **OK**.



A command prompt window will pop out. If your ping is successful which means your local network is able to reach to the device, then the command prompt window will close up automatically.



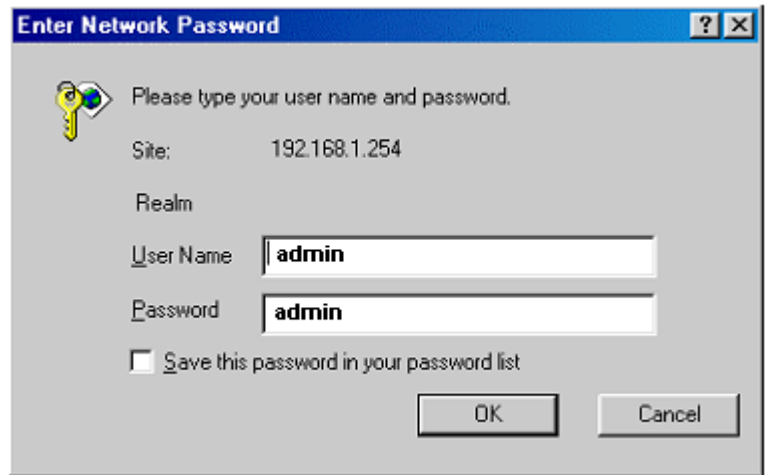
Connection fails, when you see “**Request timed out**” in the command prompt window. You may need to check your set up.



■ Connecting to the Router

Open the web browser and type <http://192.168.1.254> in the browser's address box. This number is the default IP address for this router. Press **Enter**.

A user name and password window will appear. **The default User Name and Password are "admin" and "admin"**. Press **OK** to logon to the router



Enter Network Password

Please type your user name and password.

Site: 192.168.1.254

Realm

User Name: admin

Password: admin

Save this password in your password list

OK Cancel

Product Support and Contact Information

Most problems can be solved by referring to the **Troubleshooting** section in the User's Manual. If you cannot resolve the problem with the **Troubleshooting** chapter, please contact the dealer where you purchased this product.

Contact Billion

AUSTRALIA

<http://www.billion.com.au/>

Hotline: 1300 139 159, 7 days a week.

©2004 Billion Electric Co, PC Range P/L. All Rights Reserved.

WORLDWIDE

<http://www.billion.com/>

Mac OS is a registered Trademark of Apple Computer, Inc.
Windows 98, Windows NT, Windows 2000, Windows Me and Windows XP are registered Trademarks of Microsoft Corporation.