

BIPAC 6600

Broadband Firewall Router

Quick Start Guide



For more detailed instructions on configuring and using the Broadband Firewall Router, please refer to the on-line manual.

Package Contents

- BIPAC 6600 Broadband Firewall Router
- CD-ROM containing the online manual
- Ethernet (CAT-5 LAN) Cable
- AC-AC power adapter (9V AC, 1A)
- This Quick Start Guide



Warning

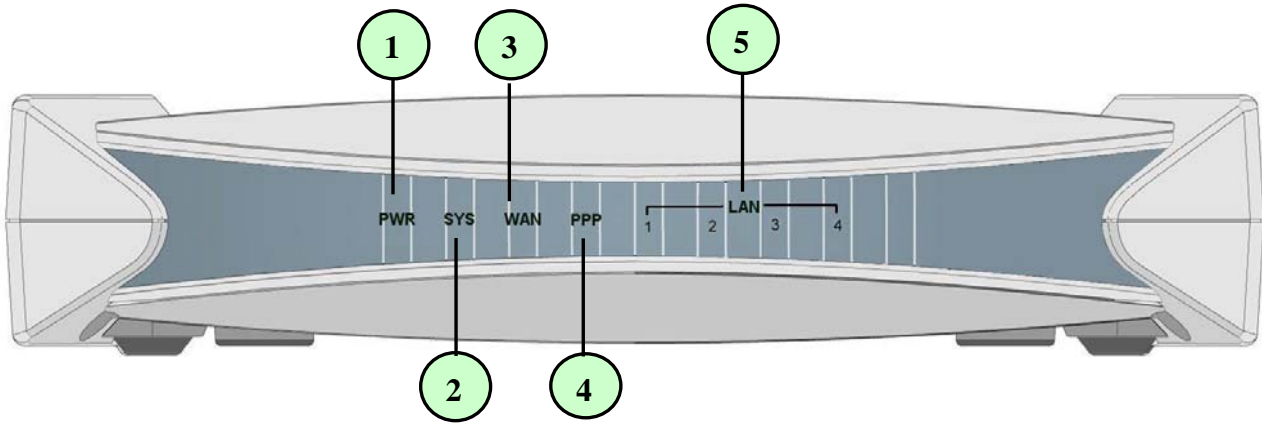
- ✓ Do not use the BIPAC 6600 in high humidity or high temperatures.
- ✓ Do not use the same power source for the BIPAC 6600 as other equipment.
- ✓ Do not open or repair the case yourself. If the BIPAC 6600 is too hot, turn off the power immediately and have it repaired at a qualified service center.
- ✓ Avoid using this product and all accessories outdoors.



Attention

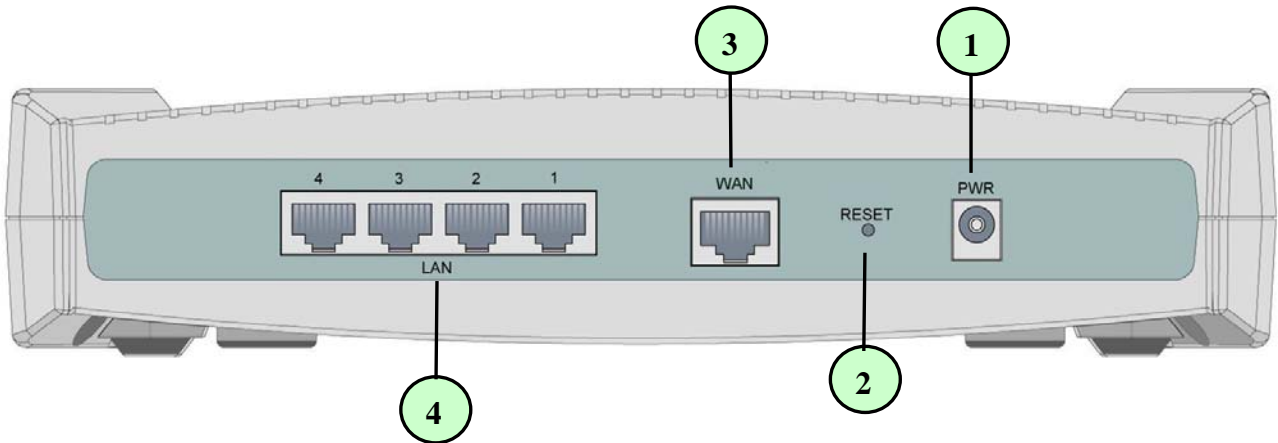
- ✓ Place the BIPAC 6600 on a stable surface.
- ✓ Only use the power adapter that comes with the package. Using a different voltage rating power adaptor may damage the router.

The Front LEDs



LED		Meaning
1	PWR	Lit green when power adapter is connected.
2	SYS	Lit when the system is ready
3	WAN	Lit green when connected at 100 Mbps. Lit orange when connected at 10 Mbps. Flashes when sending/receiving data.
4	PPP	Lit green when PPPoE connection is established.
5	LAN	Lit green when the relevant LAN link is connected.

The Rear Ports



Port		Meaning
1	PWR	Connect the supplied power adapter to this jack.
2	RESET	Press it to restore the factory default setting back.
3	WAN (RJ-45 connector)	Connect an UTP Ethernet cable to this port when connecting to a hub. Connect a crossover cable to this port when connecting to a DSL/Cable bridge or modem for establishing WAN connections.
4	LAN (RJ-45 connector)	Connect the supplied crossover cable to the relevant LAN port when connecting to a NIC (Network Interface card) in PC. Connect an UTP Ethernet cable to this port when connecting to a LAN such as a home network.

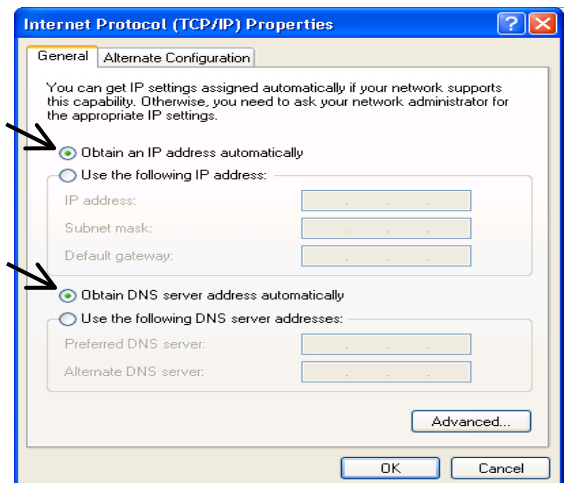
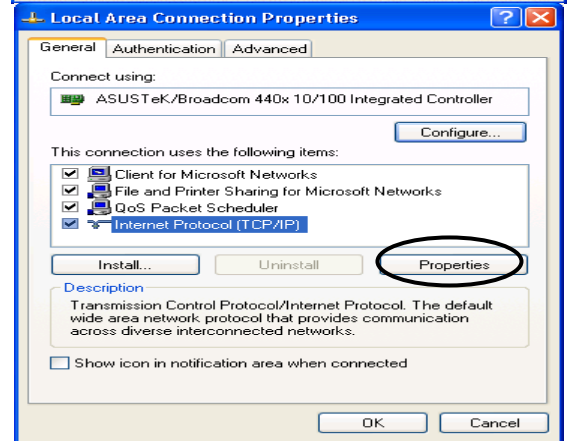
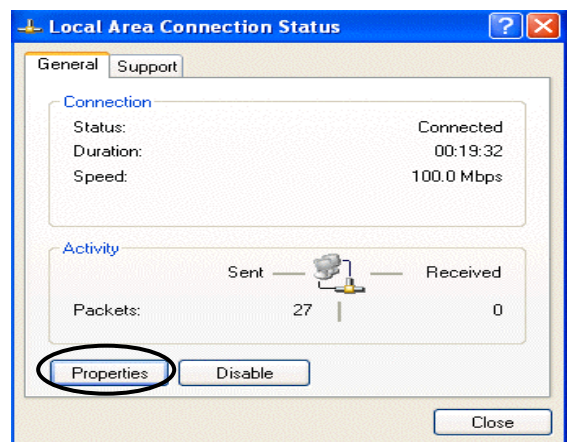
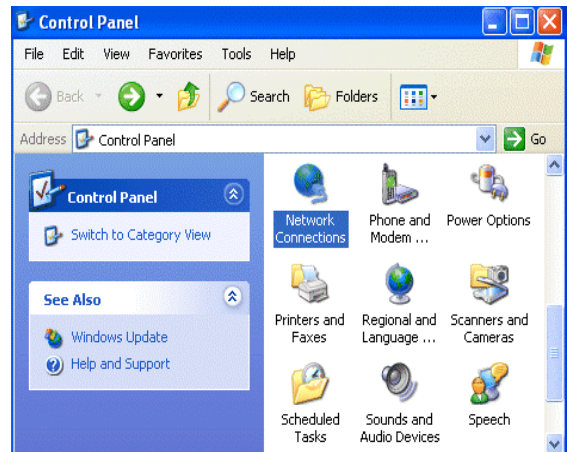
Connecting Your Broadband Router

1. Connect the Router to a **LAN** (Local Area Network) and the **WAN** network.
2. Power on the device.
3. Make sure the **PWR**, **SYS**, **WAN** LEDs are lit steadily and the relevant **LAN** LED is lit.



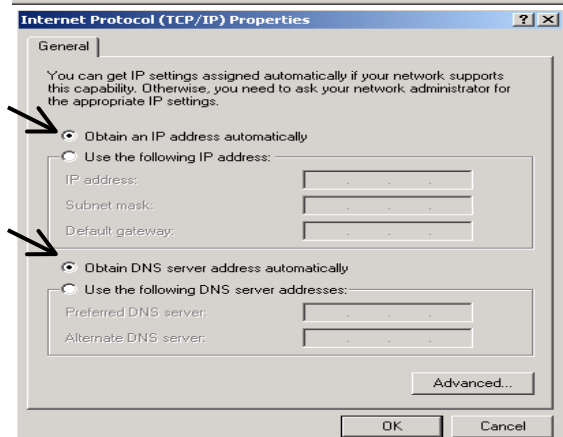
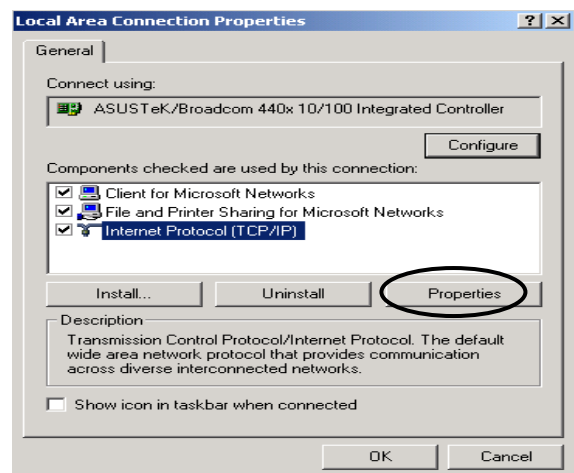
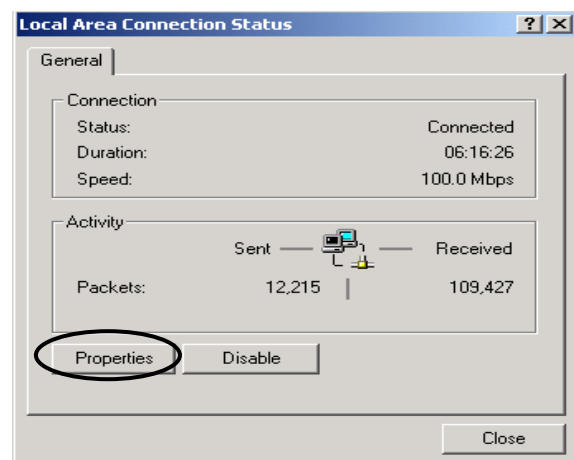
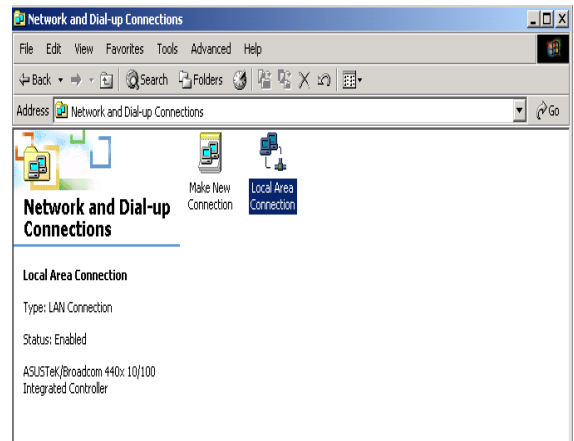
Configuring PC in Windows XP

1. Go to **Start / Control Panel (in Classic View)**. In the Control Panel, double-click on **Network Connections**
2. Double-click **Local Area Connection**.
3. In the **Local Area Connection Status** window, click **Properties**.
4. Select **Internet Protocol (TCP/IP)** and click **Properties**.
5. Select the **Obtain an IP address automatically** and the **Obtain DNS server address automatically** radio buttons.
6. Click **OK** to finish the configuration.



Configuring PC in Windows 2000

1. Go to **Start / Settings / Control Panel**. In the Control Panel, double-click on **Network and Dial-up Connections**.
2. Double-click **Local Area Connection**.
3. In the **Local Area Connection Status** window click **Properties**.
4. Select **Internet Protocol (TCP/IP)** and click **Properties**.
5. Select the **Obtain an IP address automatically** and the **Obtain DNS server address automatically** radio buttons.
6. Click **OK** to finish the configuration.



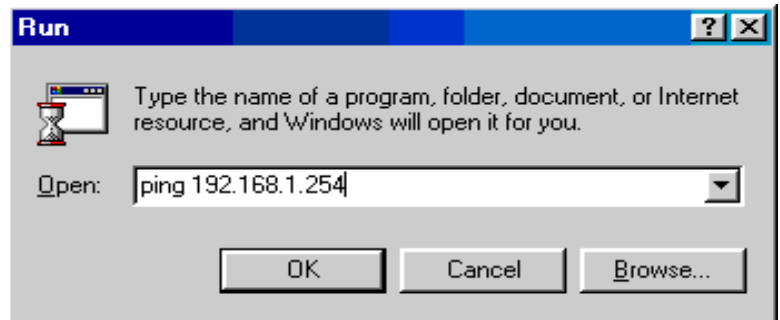
Configuring Your Broadband Firewall Router



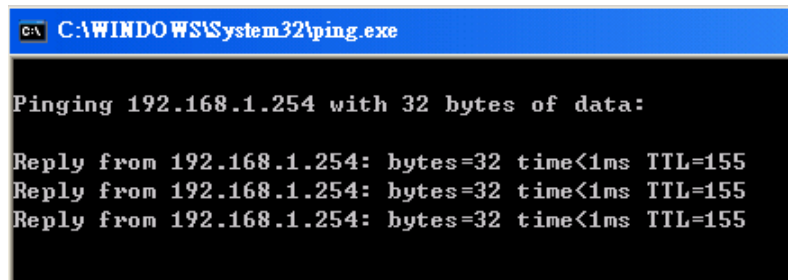
To configure this device, you must have IE 5.0 / Netscape 4.5 or above installed

■ Verifying Your Local Network Connection with the Device

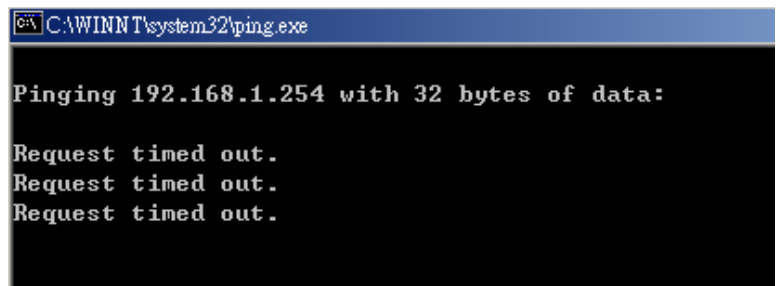
To see if this Router is visible on the local network, go to **Start / Run**. In the Run dialog box, type “**ping 192.168.1.254**” then press **OK**.



A command prompt window will pop out. If your ping is successful which means your local network is able to reach to the device, then the command prompt window will close up automatically.

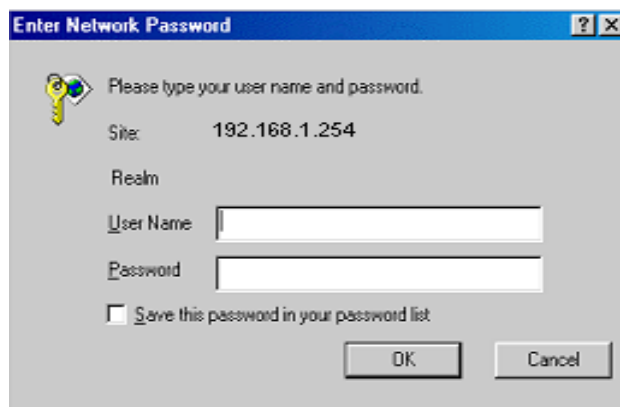
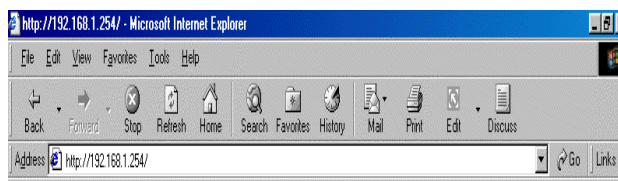


Connection fails, when you see “**Request timed out**” in the command prompt window. You may need to check your set up.



■ Connecting to the Router

1. Open the web browser and type <http://192.168.1.254> in the browser's address box. This number is the default IP address for this router. Press **Enter**.
2. A username and password window will appear. Press **OK** to proceed if you do not set any user name and password.



Product Support and Contact Information

Most problems can be solved by referring to the **Troubleshooting** section in the User Manual. If you cannot resolve the problem with the **Troubleshooting** chapter, please contact the dealer where you purchased this product.

Contact Billion

WORLDWIDE

<http://www.billion.com>