

BiPAC 7202 / 7202G
(802.11g) ADSL2+ Modem / Router

Quick Start Guide



For more detailed instructions on configuring and using the (802.11g) ADSL Router, please refer to the on-line manual.

Package Contents

- BiPAC 7202(G) ADSL2+ Modem/Router
- CD-ROM containing the on-line manual
- RJ-11 ADSL/telephone Cable
- Ethernet (CAT-5 LAN) Cable
- AC-DC power adapter (12VDC, 1A)
- This Quick Start Guide



Warning

- ✓ Do not use the BiPAC 7202(G) in high humidity or high temperatures.
- ✓ Do not use the same power source for the BiPAC 7202(G) as other equipment.
- ✓ Do not open or repair the case yourself. If the BiPAC 7202(G) is too hot, turn off the power immediately and have it repaired at a qualified service center.
- ✓ Avoid using this product and all accessories outdoors.

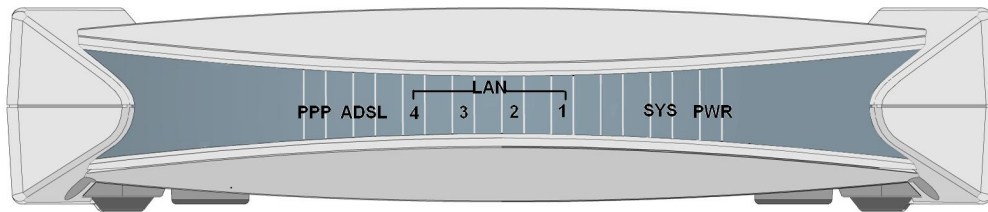


Attention

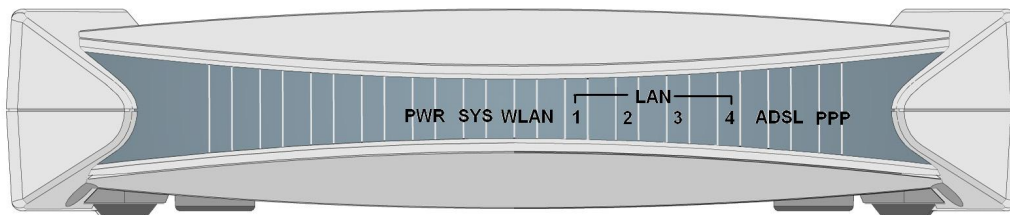
- ✓ Place the BiPAC 7202(G) on a stable surface.
- ✓ Only use the power adapter that comes with the package. Using a different voltage rating power adaptor may damage the router.

The Front LEDs

● BiPAC 7202



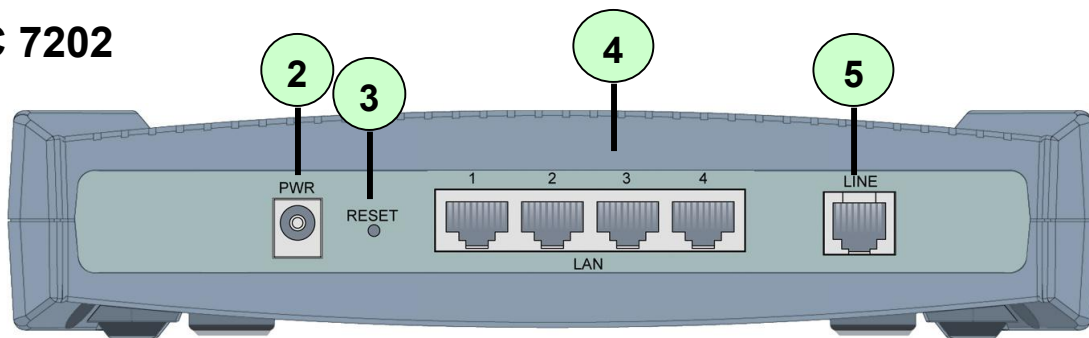
● BiPAC 7202G



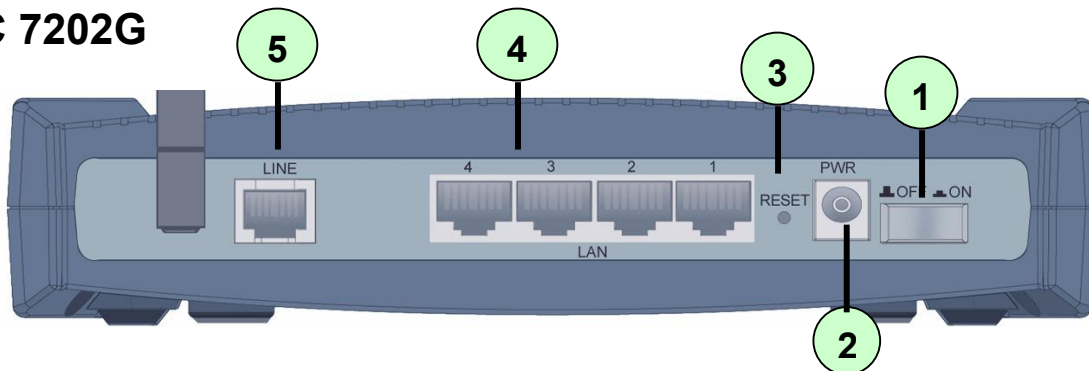
LED		Meaning
1	PPP :	● Lit steady when there is a PPPoA / PPPoE connection.
2	ADSL:	● Lit when successfully connected to an ADSL DSLAM (“linesync”).
3	LAN Port:	● Lit when connected to an Ethernet device. ● Green for 100Mbps; Orange for 10Mbps. ● Blinking when data is Transmitted / Received.
4	WLAN : (7202G only)	● Lit green when the wireless connection is established. ● Flashes when sending/receiving data.
5	SYS :	● Lit when the system is ready.
6	PWR :	● Lit when power is ON.

The Rear Ports

BiPAC 7202



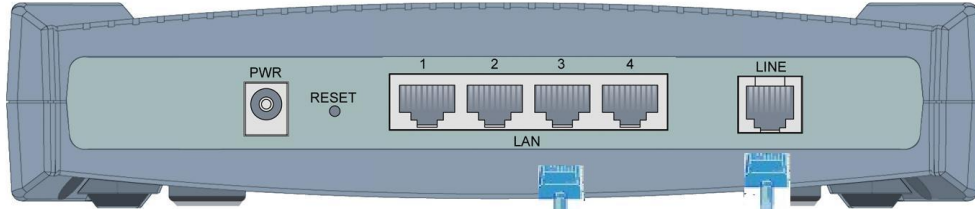
BiPAC 7202G



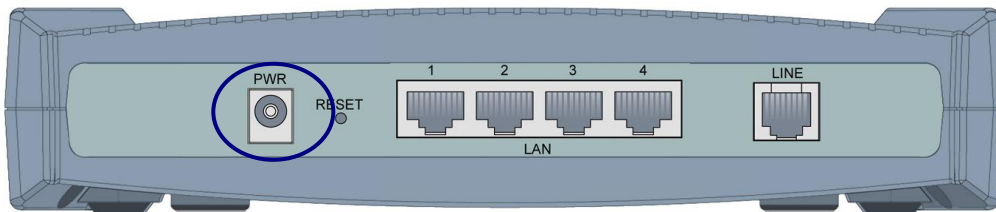
Port		Meaning
1	Power Switch	Power ON/OFF switch
2	PWR	Connect the supplied power adapter to this jack.
3	RESET (Emergency/Failure Recovery)	<p>1. After the device is powered on, press it to perform Failure recover for a dead routers: Simply hold the Emergency/Failure Recovery Button” when power on the routers and download the Application if necessary.</p> <p>2. perform the Emergency Recover for the missing Password case:(Using LEDs indications) Simply hold the Emergency/Failure Recovery Button, when router can be accessed from GUI, until the LEDs all turn Off, turn On and then Turn Off. Then, router will perform configuration factory reset and router reboot</p>
4	LAN (RJ-45 connector)	Connect a UTP Ethernet cable (Cat-5 or Cat-5e) to one of the four LAN ports when connecting to a PC or an office/home network of 10Mbps or 100Mbps.
5	LINE	Connect the supplied RJ-11 (“telephone”) cable to this port when connecting to the ADSL/telephone network.

Connecting BiPAC 7202

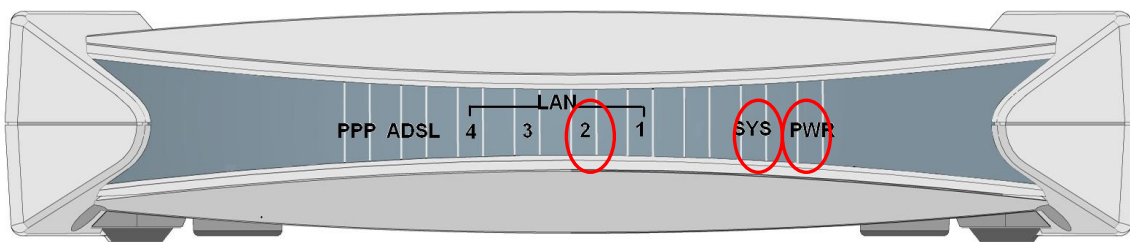
1. Connect the Router to a **LAN** (Local Area Network) and the ADSL/telephone (**LINE**) network.



2. Power on the device.

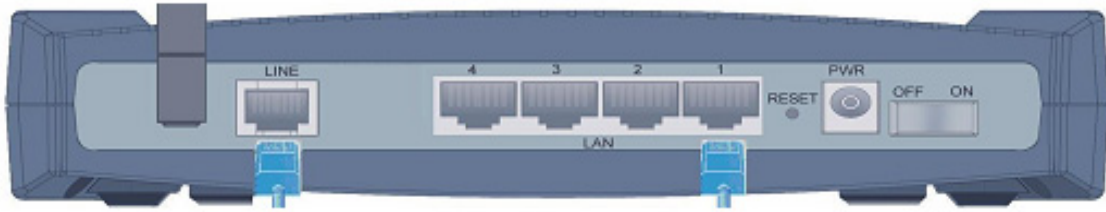


3. Make sure the **PWR** and **SYS** LEDs are lit steadily and that the relevant **LAN** LED is lit.

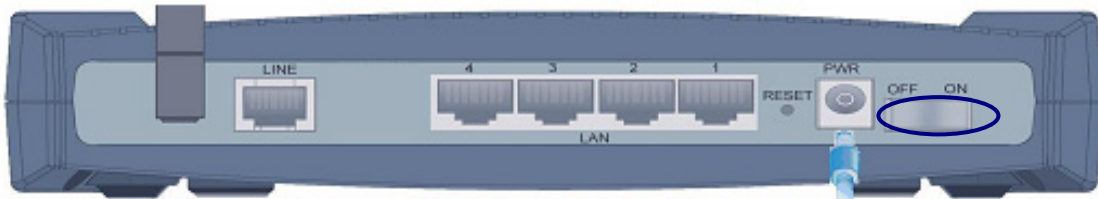


Connecting BiPAC 7202G

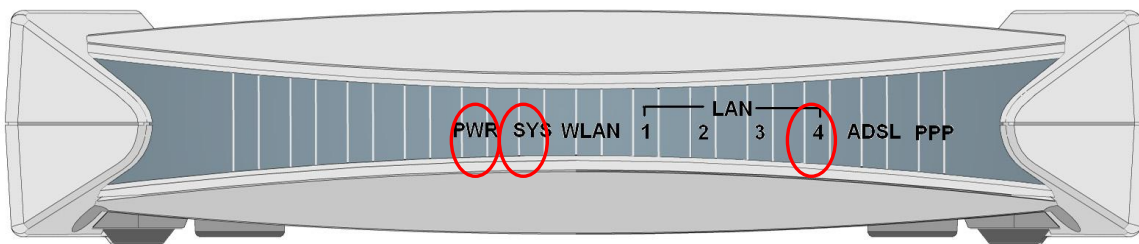
1. Connect the Router to a **LAN** (Local Area Network) and the ADSL/telephone (**LINE**) network.



2. Power on the device.

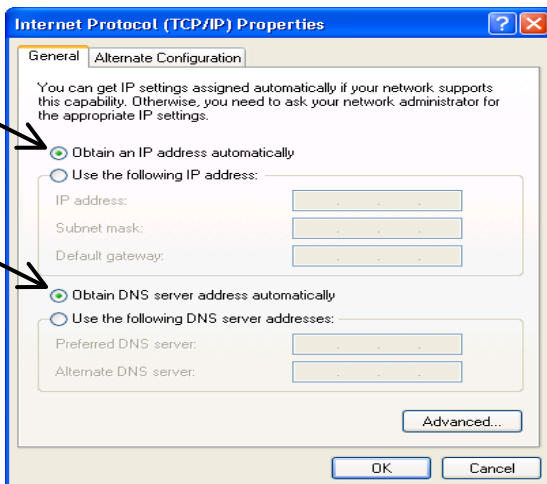
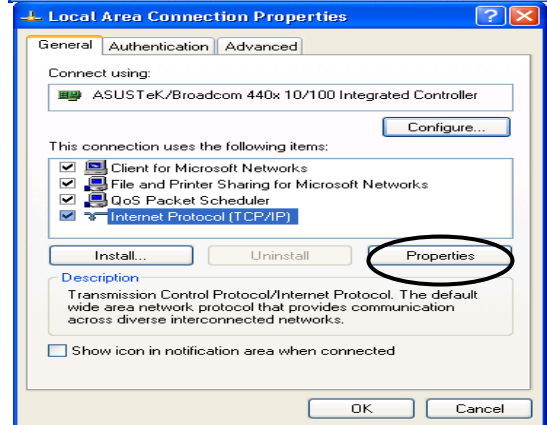
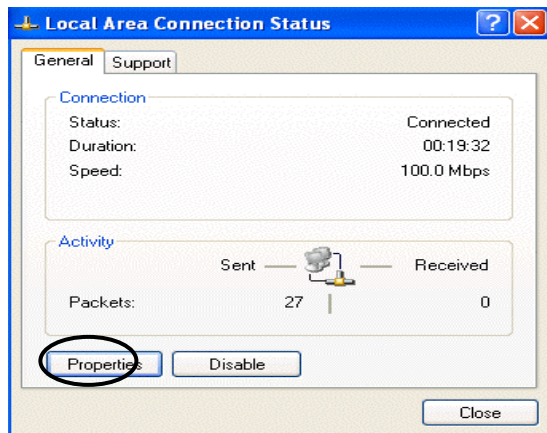
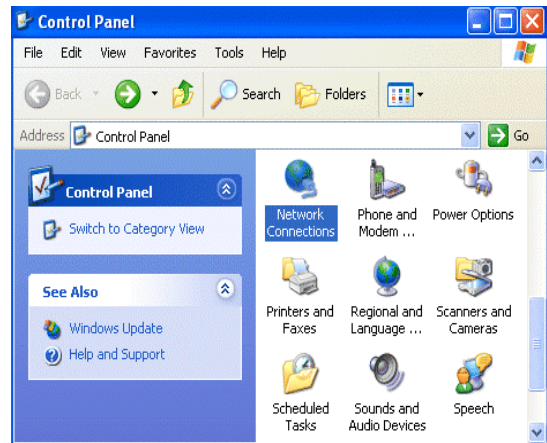


3. Make sure the **PWR**, **SYS**, and **WLAN** LEDs are lit steadily and that the relevant **LAN** LED is lit.



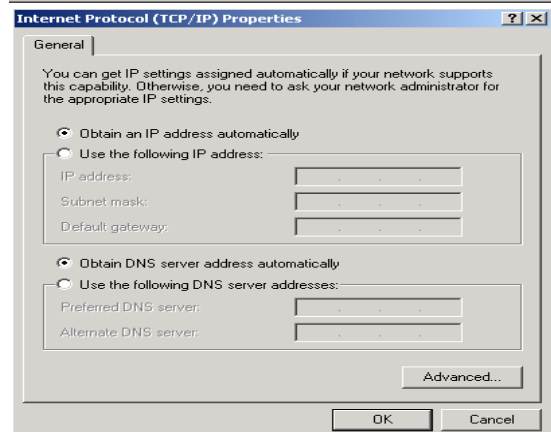
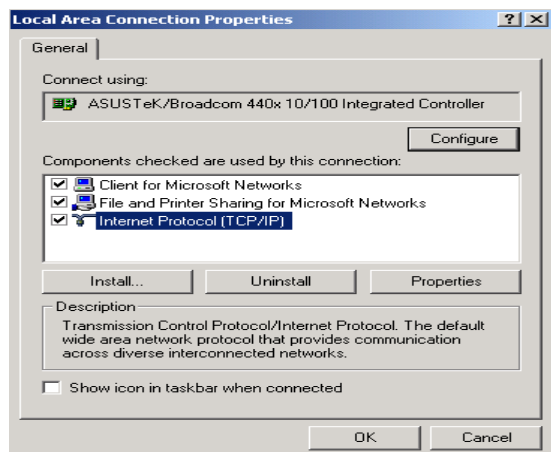
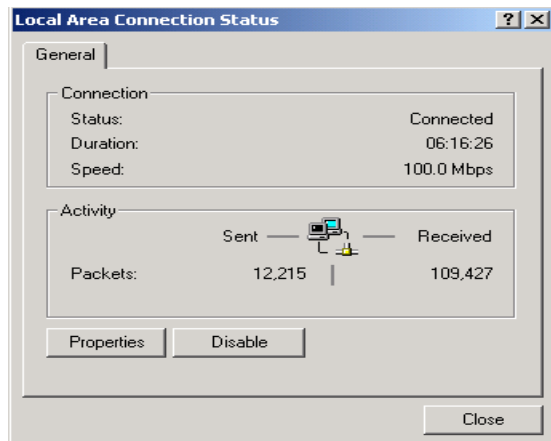
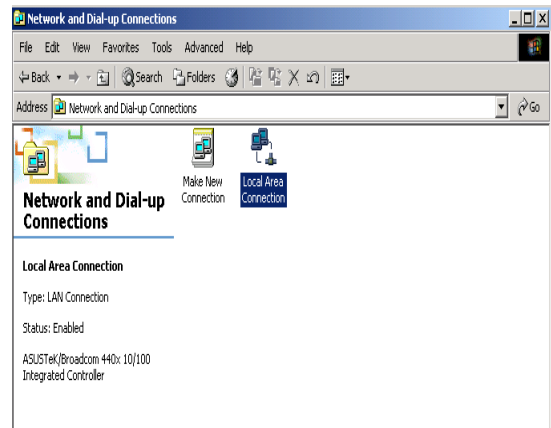
Configuring PC in Windows XP

1. Go to **Start / Control Panel (in Classic View)**. In the Control Panel, double-click on **Network Connections**
2. Double-click **Local Area Connection**.
3. In the **Local Area Connection Status** window, click **Properties**.
4. Select **Internet Protocol (TCP/IP)** and click **Properties**.
5. Select the **Obtain an IP address automatically** and the **Obtain DNS server address automatically** radio buttons.
6. Click **OK** to finish the configuration.



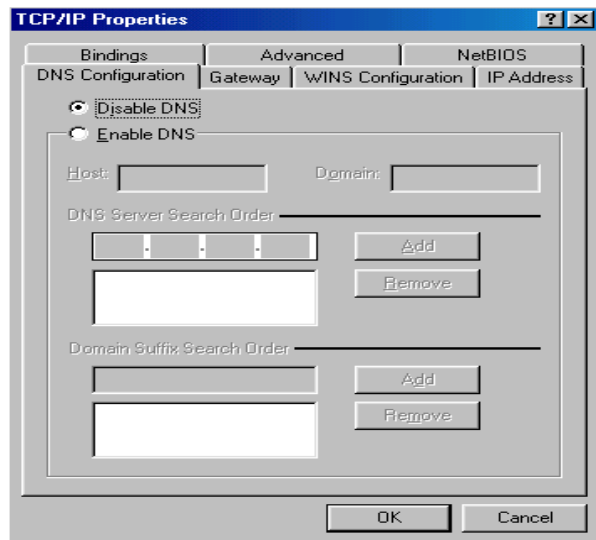
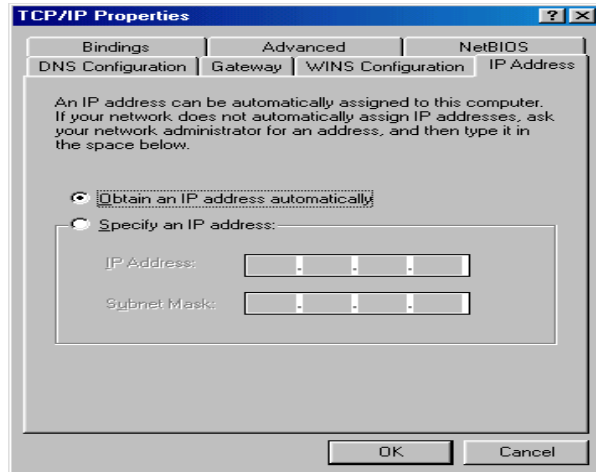
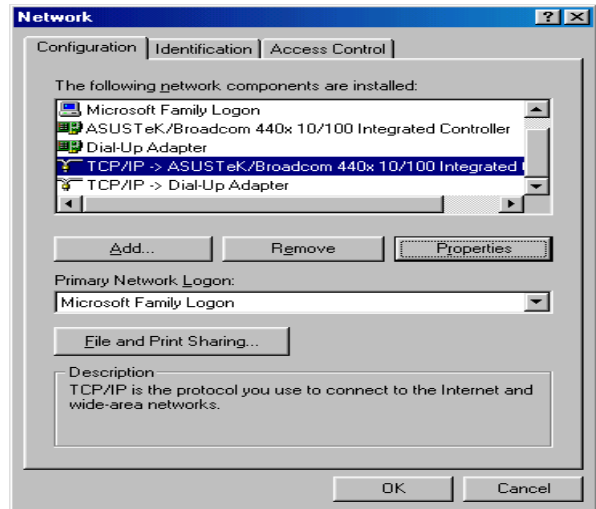
Configuring PC in Windows 2000

1. Go to **Start / Settings / Control Panel**. In the Control Panel, double-click on **Network and Dial-up Connections**.
2. Double-click **Local Area Connection**.
3. In the **Local Area Connection Status** window click **Properties**.
4. Select **Internet Protocol (TCP/IP)** and click **Properties**.
5. Select the **Obtain an IP address automatically** and the **Obtain DNS server address automatically** radio buttons.
6. Click **OK** to finish the configuration.



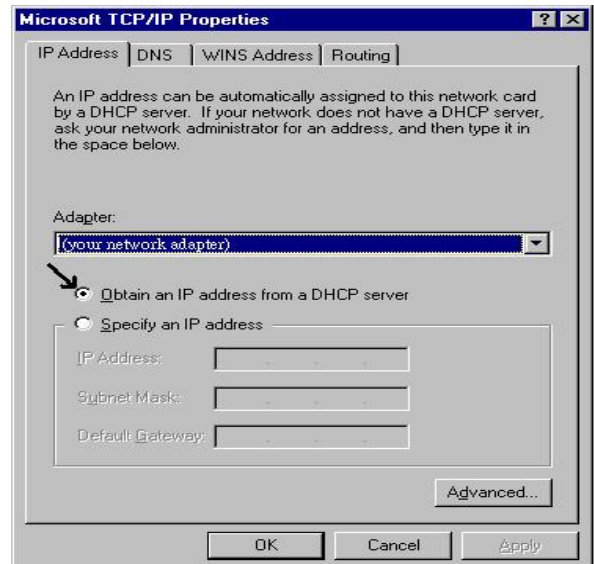
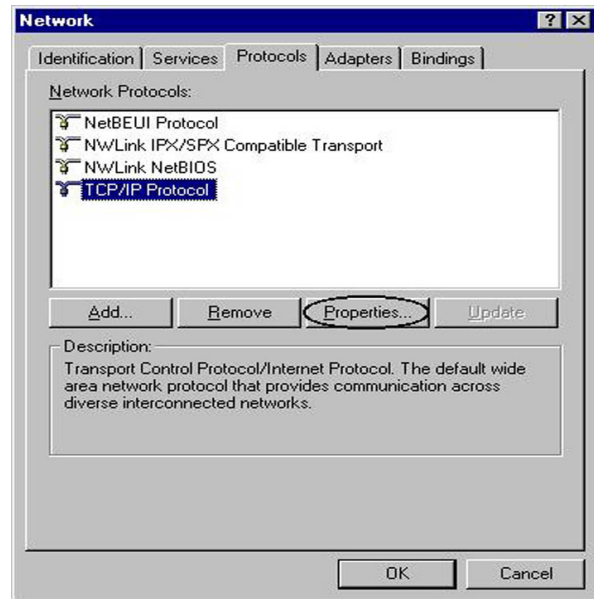
Configuring PC in Windows 98/Me

1. Go to **Start / Settings / Control Panel**. In the Control Panel, double-click on **Network** and choose the **Configuration** tab.
2. Select **TCP/IP -> NE2000 Compatible**, or the name of your Network Interface Card (NIC) in your PC.
3. Select the **Obtain an IP address automatically** radio button.
4. Then select the **DNS Configuration** tab.
5. Select the **Disable DNS** radio button and click **OK** to finish the configuration.



Configuring PC in Windows NT4.0

1. Go to **Start / Settings / Control Panel**. In the Control Panel, double-click on **Network** and choose the **Protocols** tab.
2. Select **TCP/IP Protocol** and click **Properties**.
3. Select the **Obtain an IP address from a DHCP server** radio button and click **OK**.

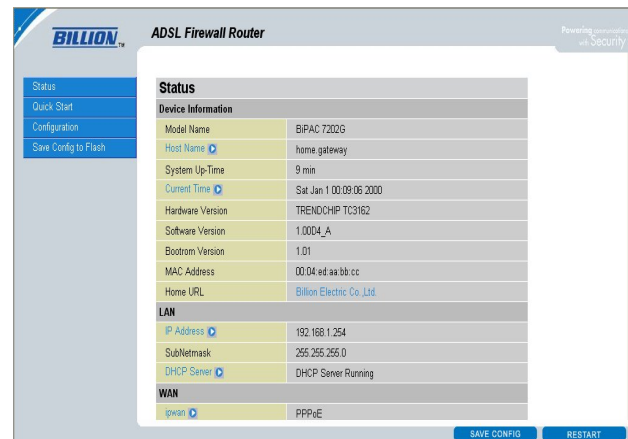


Configuring Your ADSL Firewall Router



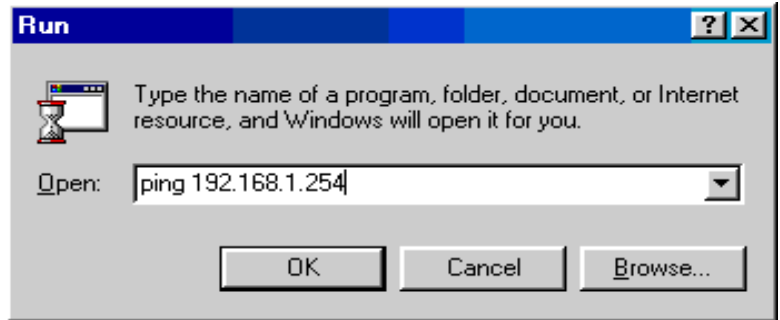
To configure this device, you must have IE 5.0 / Netscape 4.5 or above installed

1. Open the web browser and type <http://192.168.1.254> in the browser's address box. This number is the default IP address for this router. Press **Enter**.
2. A username and password window will appear. **The default username and password are admin and admin.** Press **OK** to proceed.
3. You will get a status report on web page.

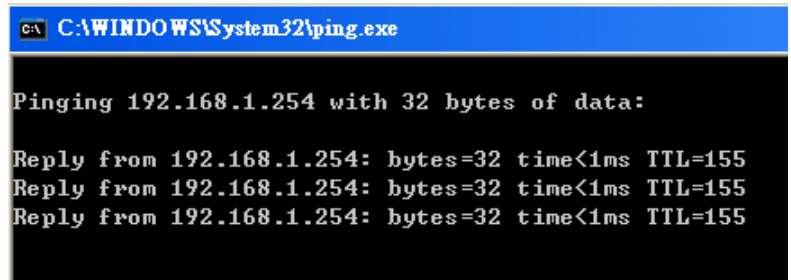


■ Verifying Your Local Network Connection with the Device

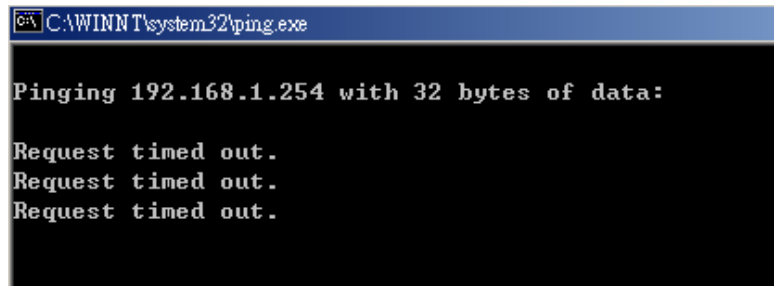
To see if this ADSL Router is visible on the local network, go to **Start / Run**. In the Run dialog box, type “**ping 192.168.1.254**” then press **OK**.



A command prompt window will pop out. If your ping is successful which means your local network is able to reach to the device, then the command prompt window will close up automatically.



Connection fails, when you see “**Request timed out**” in the command prompt window. You may need to check your set up.



Product Support and Contact Information

Most problems can be solved by referring to the **Troubleshooting** section in the User’s Manual. If you cannot resolve the problem with the **Troubleshooting** chapter, please contact the dealer where you purchased this product.

Contact Billion

WORLDWIDE

<http://www.billion.com>

Mac OS is a registered Trademark of Apple Computer, Inc.

Windows 98, Windows NT, Windows 2000, Windows Me and Windows XP are registered Trademarks of Microsoft