

**BiPAC 2075**  
**Powerline 500M / HomePlug AV**  
**Gigabit Ethernet Adapter**

**Quick Start Guide**

## *Declaration of Conformity* *Konformitätserklärung*

in accordance with the *ElectroMagnetic Compatibility Directive. 2004/108/EC*  
and *Low voltage equipment Directive 2006/95/EC*

**The Manufacturer:** *Billion Electric Co., Ltd.*  
Hersteller:

*8F, No. 192, Sec. 2, Chung Hsing Rd.,  
Hsin Tien City, Taipei Hsien  
Taiwan.*

**declares that the product:** *BiPAC 2075 , BEC 2075 ,*  
erklärt, dass das Produkt:

**Intended purpose:** *Powerline 500M / HomePlug AV 200 Gigabit Ethernet Adapter*  
Verwendungszweck:

*to which this declaration relates is in conformity with the following standard(s) or other normative document(s)*

EN 55022:2006/A1 :2007 (Class B), EN 61000-3-2: 2006,  
EN 61000-3-3:1995/ A1:2001/ A2:2005, EN 50412-2-1: 2005,  
EN 55024:1998/ A1:2001/ A2:2003  
CISPR/1/XX/CDV Opt B,

IEC 60950-1:2005 , IEC 61000-4-2 : 1995/ A1:1998/ A2:2000  
IEC 61000-4-3 : 2008, IEC 61000-4-4 : 2004,  
IEC 61000-4-5 : 2005, IEC 61000-4-6 : 2006,  
IEC 61000-4-8 : 2001, IEC 61000-4-11 : 2004 ,

Safety EN 60950-1:2006+A11:2009

*Following the provisions of 2004/108/EC Directive, 2006/95/EC*

**This declaration is issued by:**

Diese Erklärung wird verantwortlich abgegeben durch:

*LONDON*

(Place)

*13 / Jun / 2011*

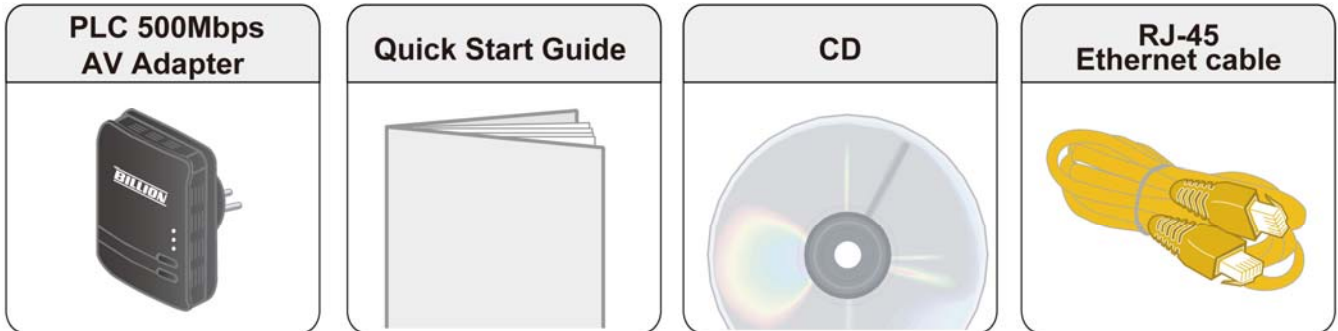
(Date)



*Edward Kung  
Managing Director  
Etec Components Ltd.*

## Package Content (BiPAC 2075 )

- BiPAC 2075 PLC 500M / HomePlug AV Gigabit Ethernet Adapter
- Quick Start Guide
- CD (containing user manual, QSG and utility)
- Ethernet (CAT-5 LAN) cable



### **Warning**

- Do not use the adapter in high humidity or high temperatures.
- Do not open or repair the case yourself.
- Avoid using this product and all accessories outdoors.



### **Attention**

- Place the adapter on a stable surface.
- “Homeplug AV” , “IEEE 1901 standard” compliant Power Line Communication (PLC) adapter for remote access is necessary

# Hardware Overview

## The LEDs and Buttons



**POWER:**

\* Lit when the device is power on.

**PLC:**

\* Lit when the power line sync is established.  
\* Blinking quickly when data is transmitted or received.

**ETH:**

\* Lit when connected to an Ethernet device.  
\* Blinking when data is transmitted or received via Ethernet port.

**SYNC:**

\* Used to establish a LAN network with other PLC adapters.

**Reset:**

\* Press this button to for 1~3 second(s) to reset device to factory default settings.

## The Rear Side

(For separated plug clip type only)



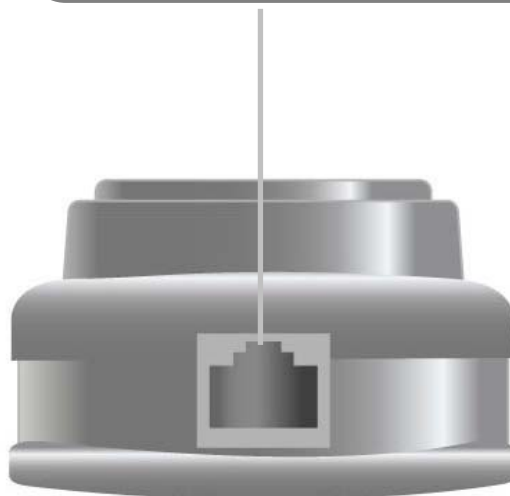
**Clip Socket:**

\* Install the clip into this socket.

## The Ethernet Port

**Gigabit Ethernet Port:**

Connect the PLC 500M/ AV device with an Ethernet device (e.g. computer, router, hub/switch , IP phone, IPTV set-top-box, gaming consoles...), using the RJ-45 (Cat.5 8P8C) Ethernet cable included.

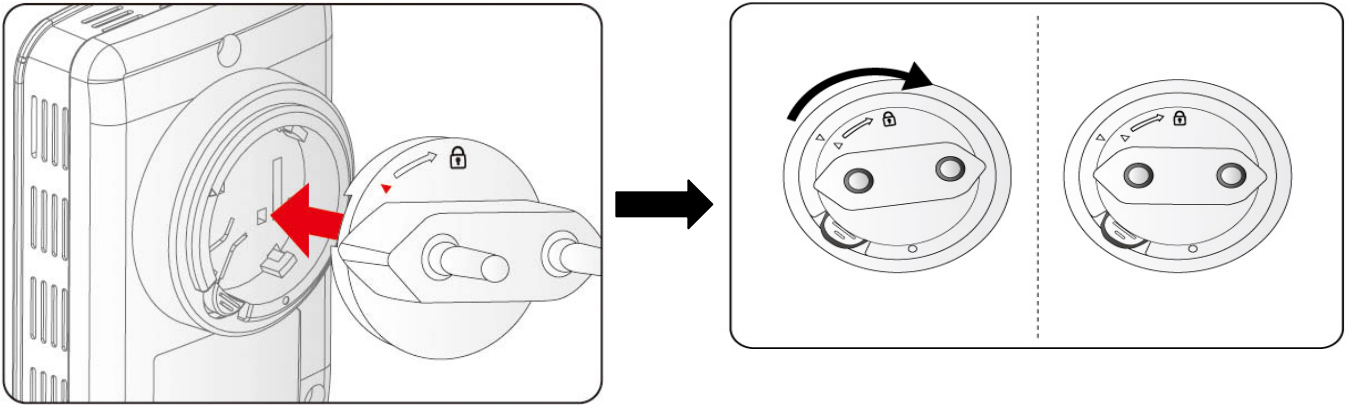


**Warning**

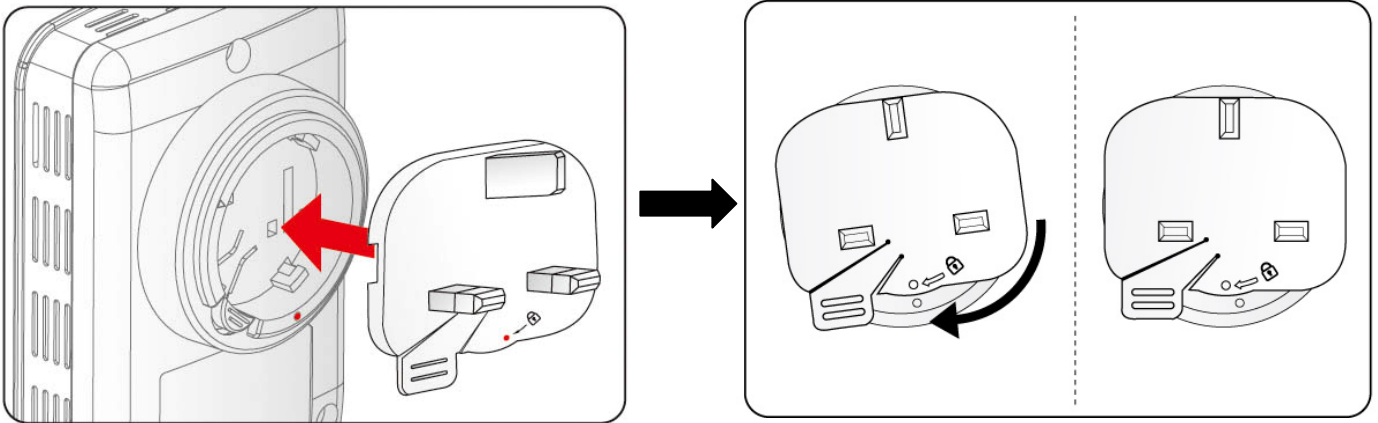
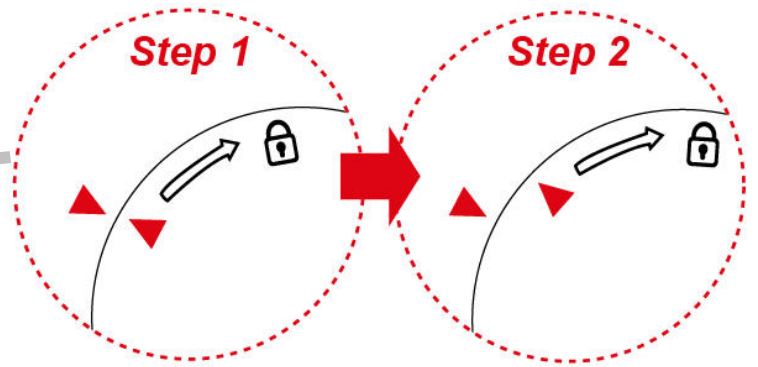
- Please DO NOT remove or disassemble the socket clip frequently as this may cause serious damage to your PLC 500M /AV device!

## Clip Installation (For separated plug clip type only)

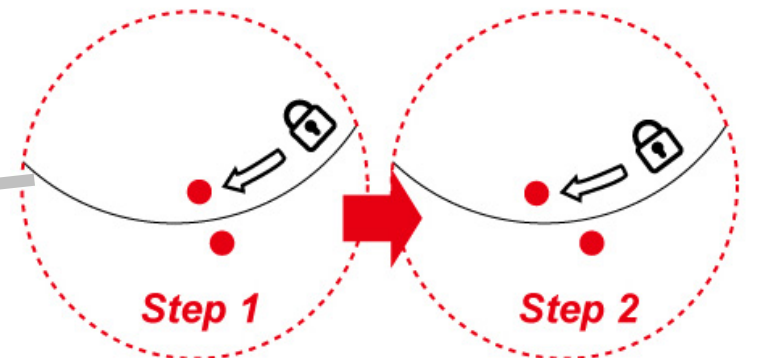
Installing the clip with BiPAC 2075



Follow the diagrams and direction to install the clip.  
(This is an example of EU clip.  
Please check the lock instruction on your clip. If you got the “**Triangle Lock**”, refer to right diagram.)



Follow the diagrams and direction to install the clip.  
(This is an example of UK clip.  
Please check the lock instruction on your clip. If you got the “**Circle Lock**”, refer to right to diagram.)

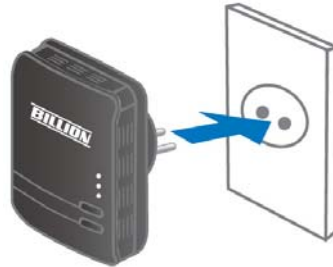


## Hardware Installation

### 1. Power Connection

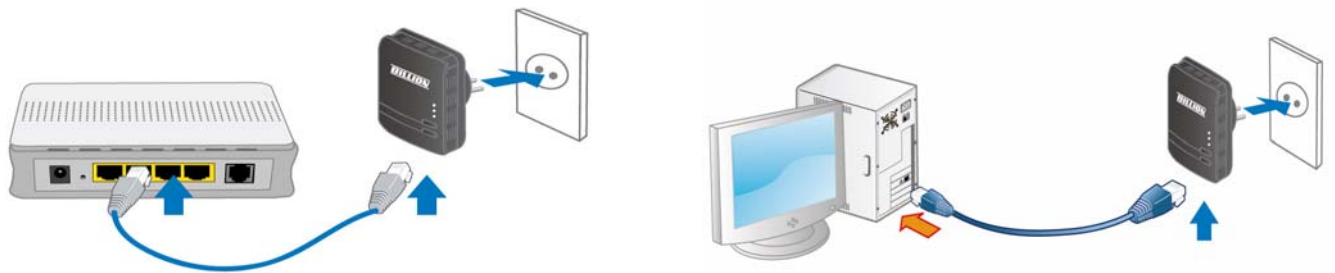
#### **BiPAC 2075**

Plug the Power Line 500M /Homeplug AV Gigabit Ethernet Adapter into the wall outlet/socket.



### 2. LAN Connection

Connect the supplied RJ-45 Ethernet cable to the Ethernet port on Power Line 500M /AV Ethernet bridge/adapter and the other side to the device's Ethernet interface.

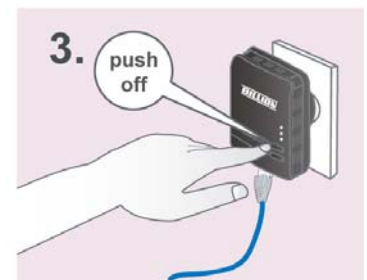
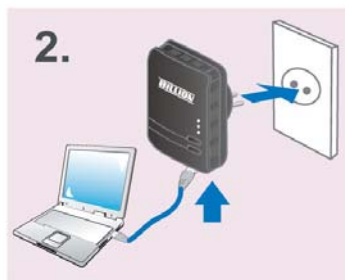


### 3. Connection of the BiPAC 2075

Connect a network cable to the adapter and then plug the BiPAC 2075 into a power socket.

Then connect the BiPAC 2075 to a PC, modem, router or a set-top-box.

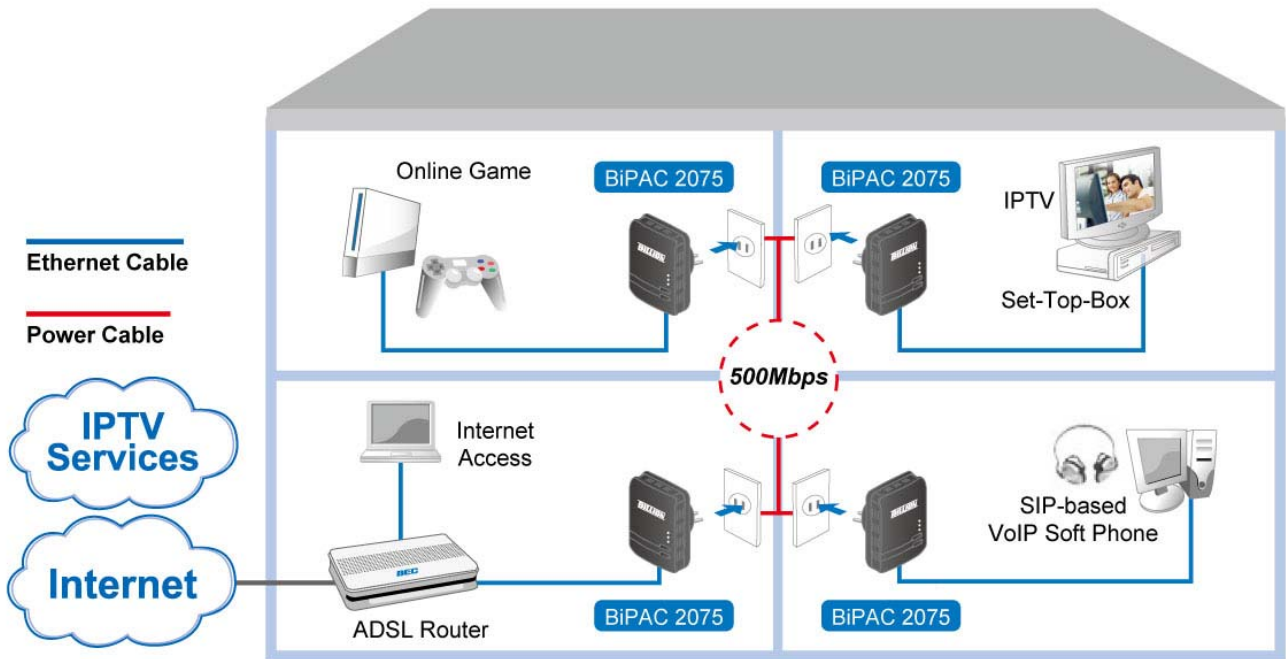
Create a secure network by simply pushing the SYNC button for 1~3 seconds.



## Setup Utility

After you complete the hardware installation, insert the CD-ROM to the CD-ROM drive to perform Setup Utility for network configuration. The Setup Utility will auto-run. Follow the step-by-step configuration wizard, the utility will guide you complete the basic network configuration.

## Product Application



### Product Support and Contact Information

Most problems can be solved by referring to the **Troubleshooting** section in the User's Manual. If you cannot resolve the problem with the **Troubleshooting** chapter, please contact the dealer where you purchased this product.

### Contact Billion WORLDWIDE

<http://www.billion.com>