

# **BiGuard 2**

## **iBusiness Security Gateway Home-Office**

### **Quick Start Guide**



### Introduction

BiGuard 2 is a compact device of 8 ports switch integrated with VPN and Firewall features. It is used for home offices or mobile users to dial up and connect with corporate network, or for very small offices to be connected with head offices. BiGuard 2 is designed for business requiring application-based network solutions at low-capital investment and is perfectly for the needs of telecommuters and small sized business.

### Package Contents

- BiGuard 2 iBusiness Security Gateway Home-Office
- CD-ROM containing the manual
- Quick Start Guide
- Ethernet (CAT-5 LAN) Cable
- AC-DC power adapter (12V DC, 1A)



#### **Warning**

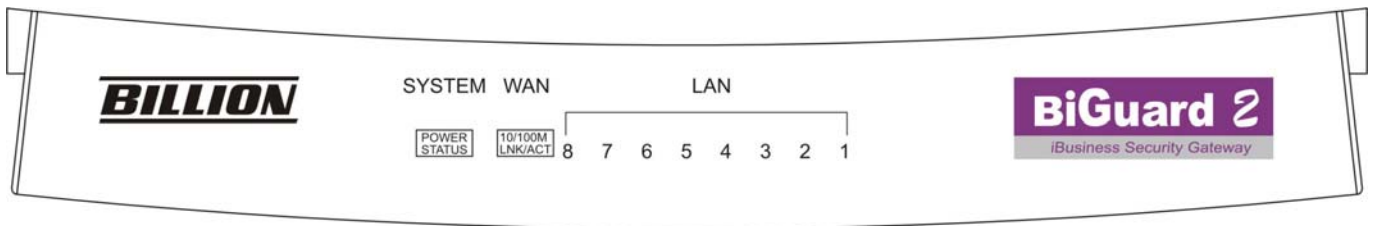
- ✓ Do not use the *BiGuard 2* in high humidity or high temperatures.
- ✓ Do not use the same power source for the *BiGuard 2* as other equipment.
- ✓ Do not open or repair the case yourself. If the *BiGuard 2* is too hot, turn off the power immediately and have it repaired at a qualified service center.



#### **Attention**

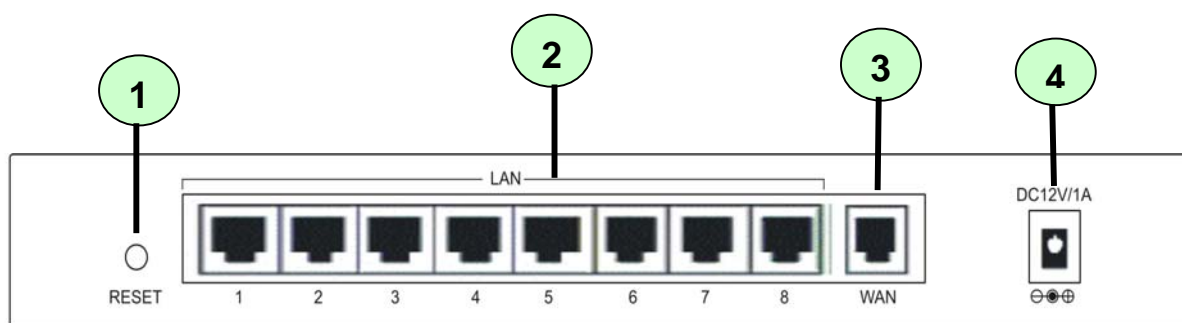
- ✓ Place the *BiGuard 2* on a stable surface.
- ✓ Only use the power adapter that comes with the package. Using a different voltage rating power adaptor may damage the router.

## The Front LEDs



LED	Meaning
<b>Power</b>	A steady light indicates connection to power source
<b>STATUS</b>	A blinking light indicates device is writing flash
<b>WAN</b>	Light when connect to an Ethernet device. <b>10/100M</b> : Light when link for 100Mbps otherwise for 10Mbps <b>LNK/ACT</b> : Lit when device connected and blinking when data is transmitted/received.
<b>LAN</b> 1x – 8x	Light when connect to an Ethernet device. <b>10/100M</b> : Light when link for 100Mbps otherwise for 10Mbps <b>LNK/ACT</b> : Lit when device connected and blinking when data is transmitted/received.

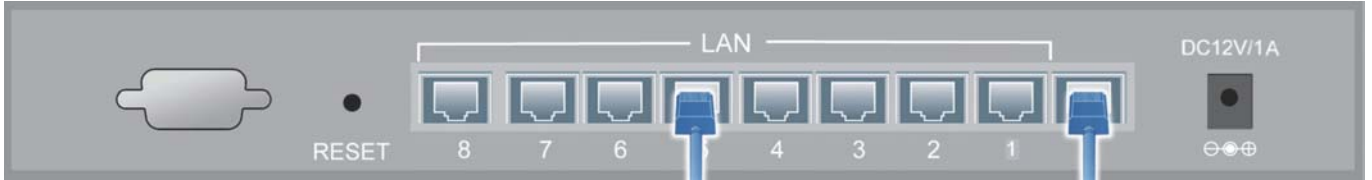
## The Rear Ports



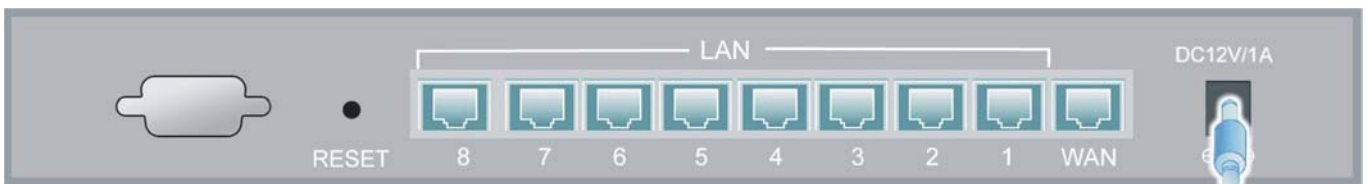
Port		Meaning
1	RESET	After the device is powered on, press it to reset the device or restore to factory default settings. 0-3 seconds: The Status LED will light 6 seconds above: Restore to factory default settings (this is used when you cannot login to the router. E.g. forgot the password)
2	LAN 1X — 8X (RJ-45 connector)	Connect a UTP Ethernet cable (Cat-5 or Cat-5e) to one of the eight LAN ports when connecting to a PC or an office/home network of 10Mbps or 100Mbps.
3	WAN	WAN 10/100M Ethernet port (with auto crossover support); connect xDSL/Cable modem here.
4	DC12V	Connect DC power adapter here.(DC12V Power)

## Connecting Your Router

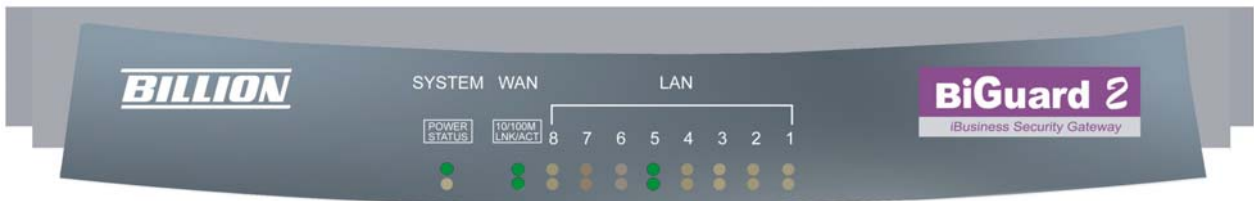
1. Connect the Router to a **LAN** (Local Area Network) & WAN (Connect to Cable or ADSL modem).



2. Power on the device.

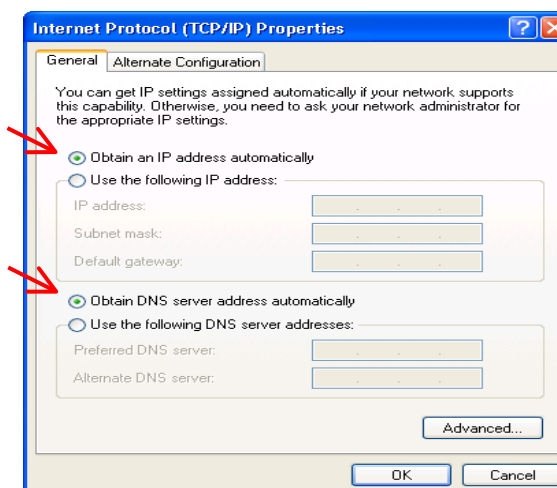
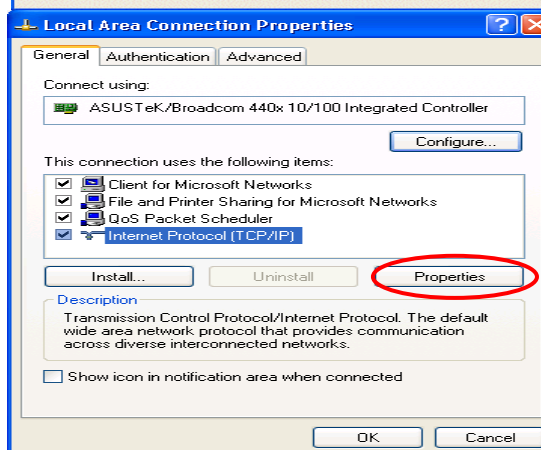
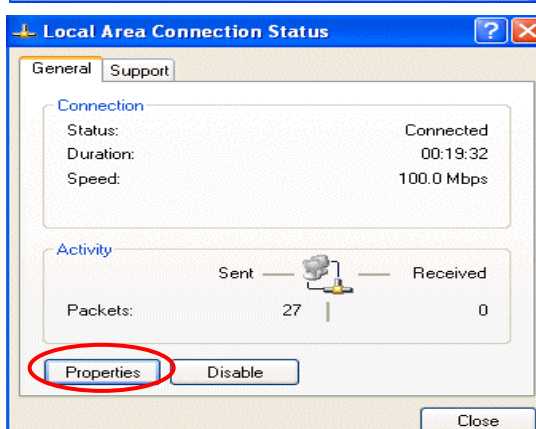
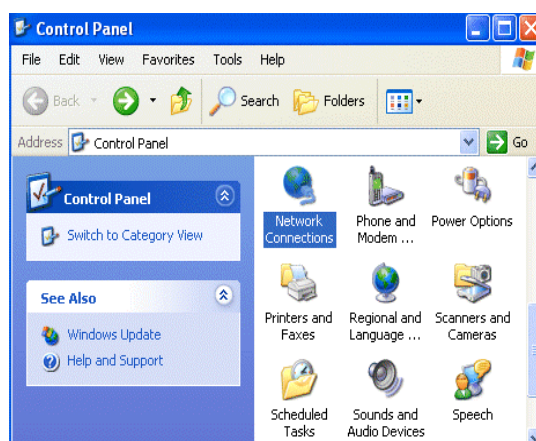


3. Make sure the **Power** LED is light steadily and that the **WAN** and **relevant LAN** LED is light.



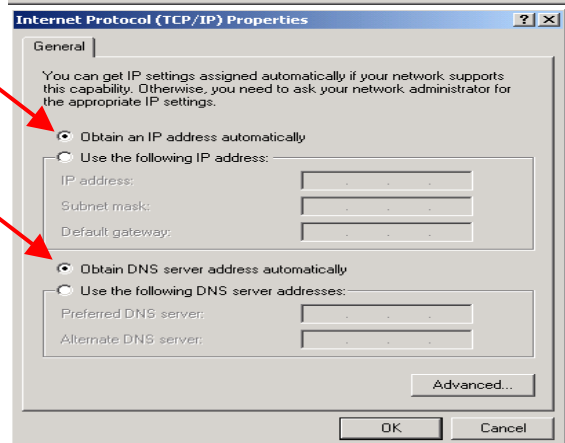
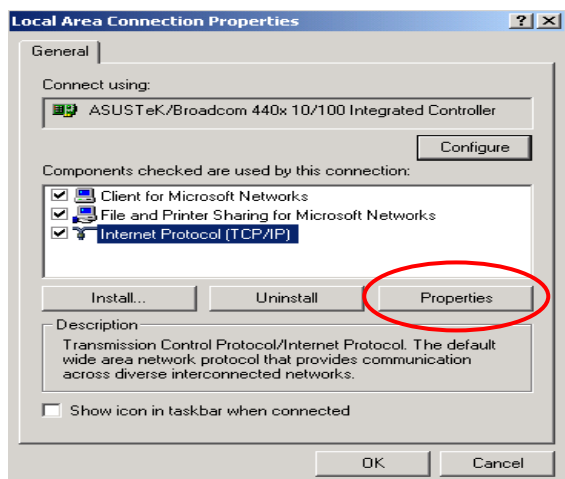
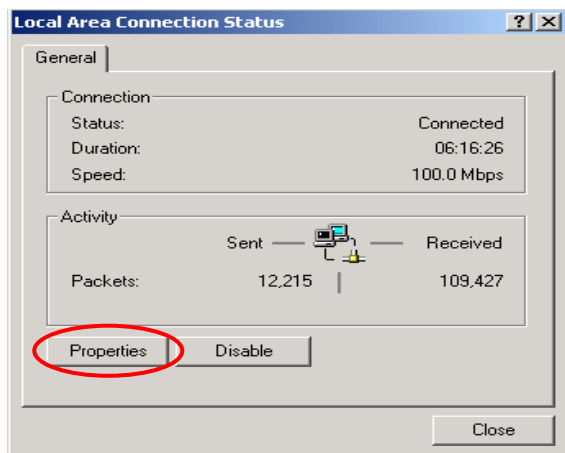
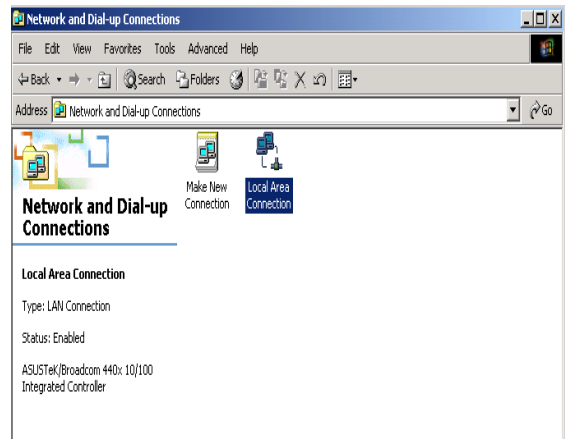
## Configuring PC in Windows XP

1. Go to **Start / Control Panel (in Classic View)**. In the Control Panel, double-click on **Network Connections**.
2. Double-click **Local Area Connection**.
3. In the **Local Area Connection Status** window, click **Properties**.
4. Select **Internet Protocol (TCP/IP)** and click **Properties**.
5. Select the **Obtain an IP address automatically** and the **Obtain DNS server address automatically** radio buttons.
6. Click **OK** to finish the configuration.



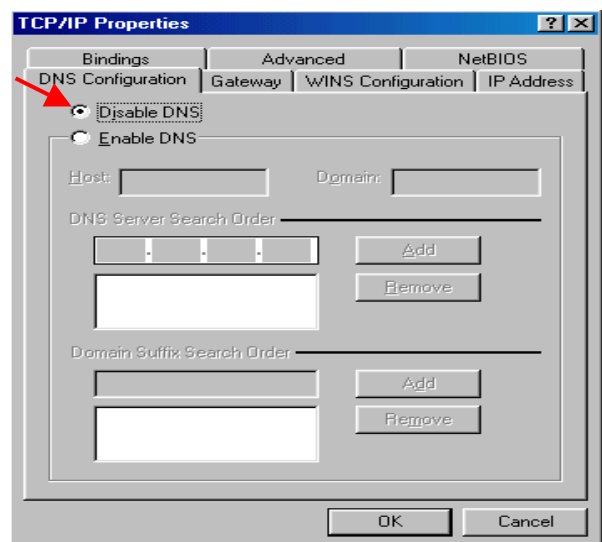
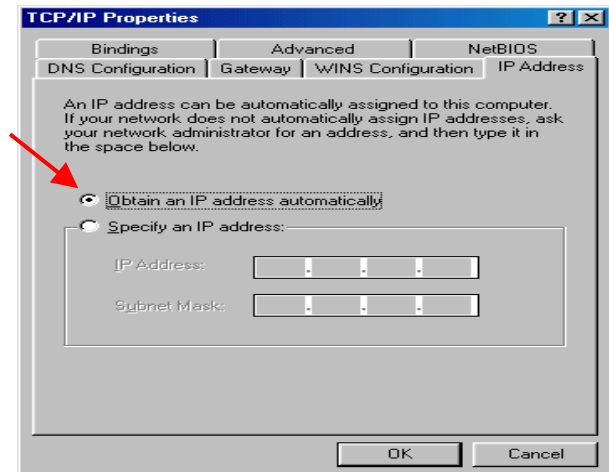
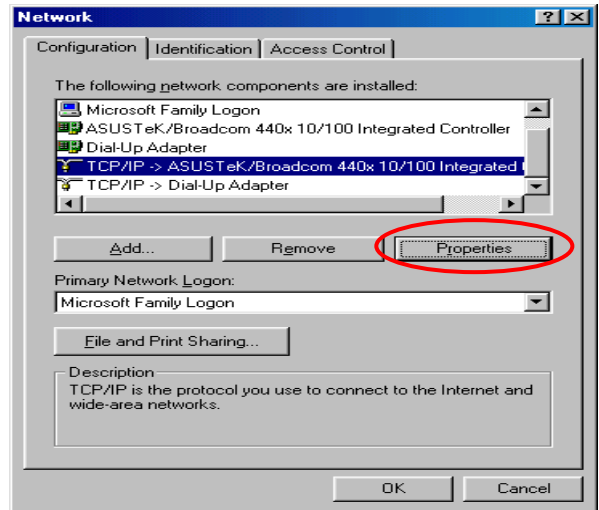
# Configuring PC in Windows 2000

1. Go to **Start / Settings / Control Panel**. In the Control Panel, double-click on **Network and Dial-up Connections**.
2. Double-click **Local Area Connection**.
3. In the **Local Area Connection Status** window click **Properties**.
4. Select **Internet Protocol (TCP/IP)** and click **Properties**.
5. Select the **Obtain an IP address automatically** and the **Obtain DNS server address automatically** radio buttons.
6. Click **OK** to finish the configuration.



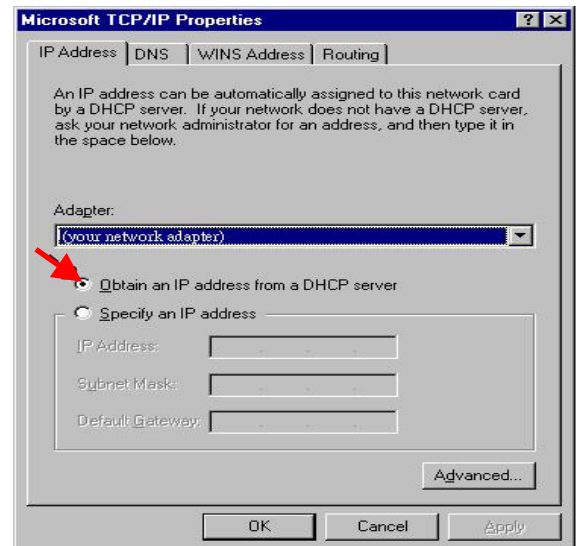
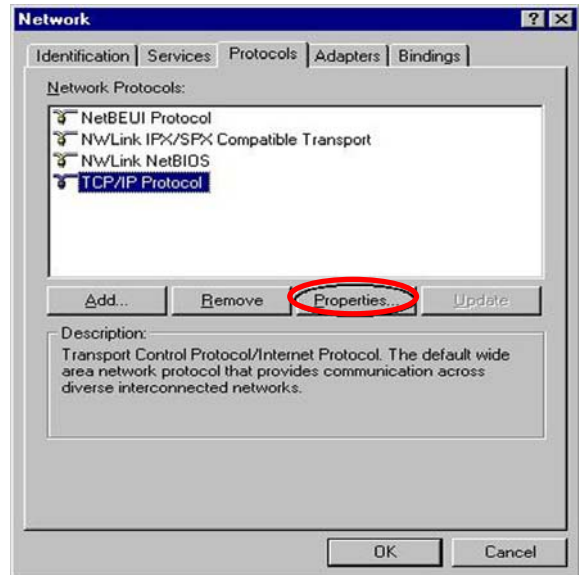
## Configuring PC in Windows 98/Me

1. Go to **Start / Settings / Control Panel**. In the Control Panel, double-click on **Network** and choose the **Configuration** tab.
2. Select **TCP/IP -> NE2000 Compatible**, or the name of your Network Interface Card (NIC) in your PC.
3. Select the **Obtain an IP address automatically** radio button.
4. Then select the **DNS Configuration** tab.
5. Select the **Disable DNS** radio button and click **OK** to finish the configuration.



## Configuring PC in Windows NT4.0

1. Go to **Start / Settings / Control Panel**. In the Control Panel, double-click on **Network** and choose the **Protocols** tab.
2. Select **TCP/IP Protocol** and click **Properties**.
3. Select the **Obtain an IP address from a DHCP server** radio button and click **OK**.



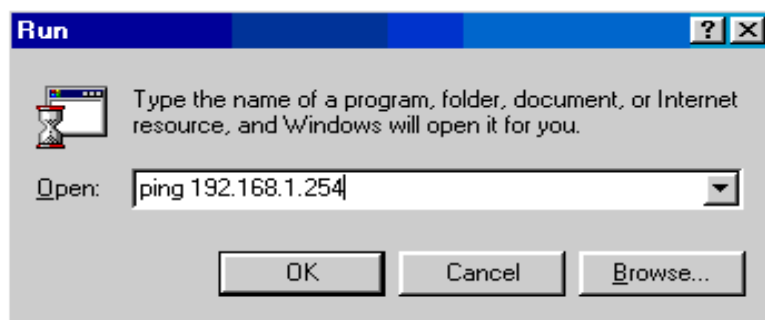
## Configuring Your iBusiness Security Gateway Home-Office



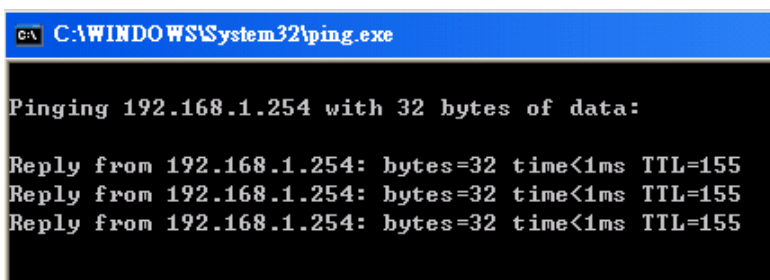
*To configure this device, you must have IE 5.0 / Netscape 4.5 or above installed*

### ■ Verifying Your Local Network Connection with the Device

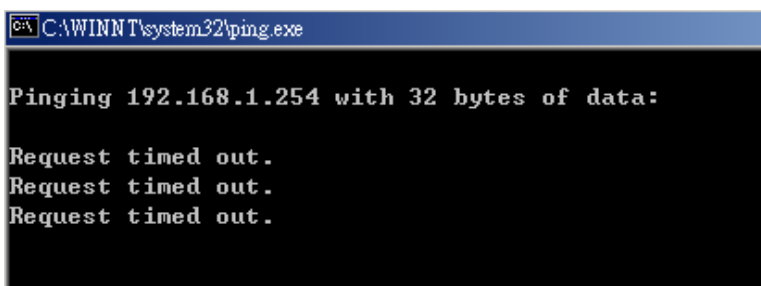
To see if this Router is visible on the local network, go to **Start / Run**. In the Run dialog box, type “**ping 192.168.1.254**” then presses **OK**.



A command prompt window will pop out. If your ping is successful which means your local network is able to reach to the device, then the command prompt window will close up automatically.



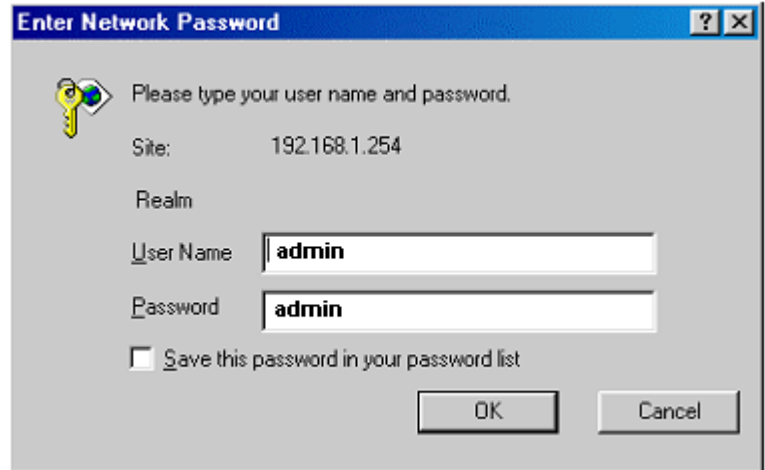
Connection fails, when you see “**Request timed out**” in the command prompt window. You may need to check your set up.



### ■ Connecting to the Router

Open the web browser and type <http://192.168.1.254> in the browser's address box. This number is the default IP address for this router. Press **Enter**.

A user name and password window will appear. **The default User Name and Password are "admin" and "admin"**. Press **OK** to logon to the router



Enter Network Password

Please type your user name and password.

Site: 192.168.1.254

Realm

User Name: admin

Password: admin

Save this password in your password list

OK Cancel

## Product Support and Contact Information

Most problems can be solved by referring to the **Troubleshooting** section in the User's Manual. If you cannot resolve the problem with the **Troubleshooting** chapter, please contact the dealer where you purchased this product.

### Contact Billion

#### WORLDWIDE

<http://www.billion.com/>

Mac OS is a registered Trademark of Apple Computer, Inc.  
Windows 98, Windows NT, Windows 2000, Windows Me and Windows XP are registered Trademarks of Microsoft Corporation.

